



THE PHILIPPINE SUSTAINABLE DEVELOPMENT GOALS MIMAROPA REGION'S PACE OF PROGRESS RESULTS

Based on the 2023 SDG Watch Updates

Reference Number: 2024-IG-65



CURRENT STATUS INDEX

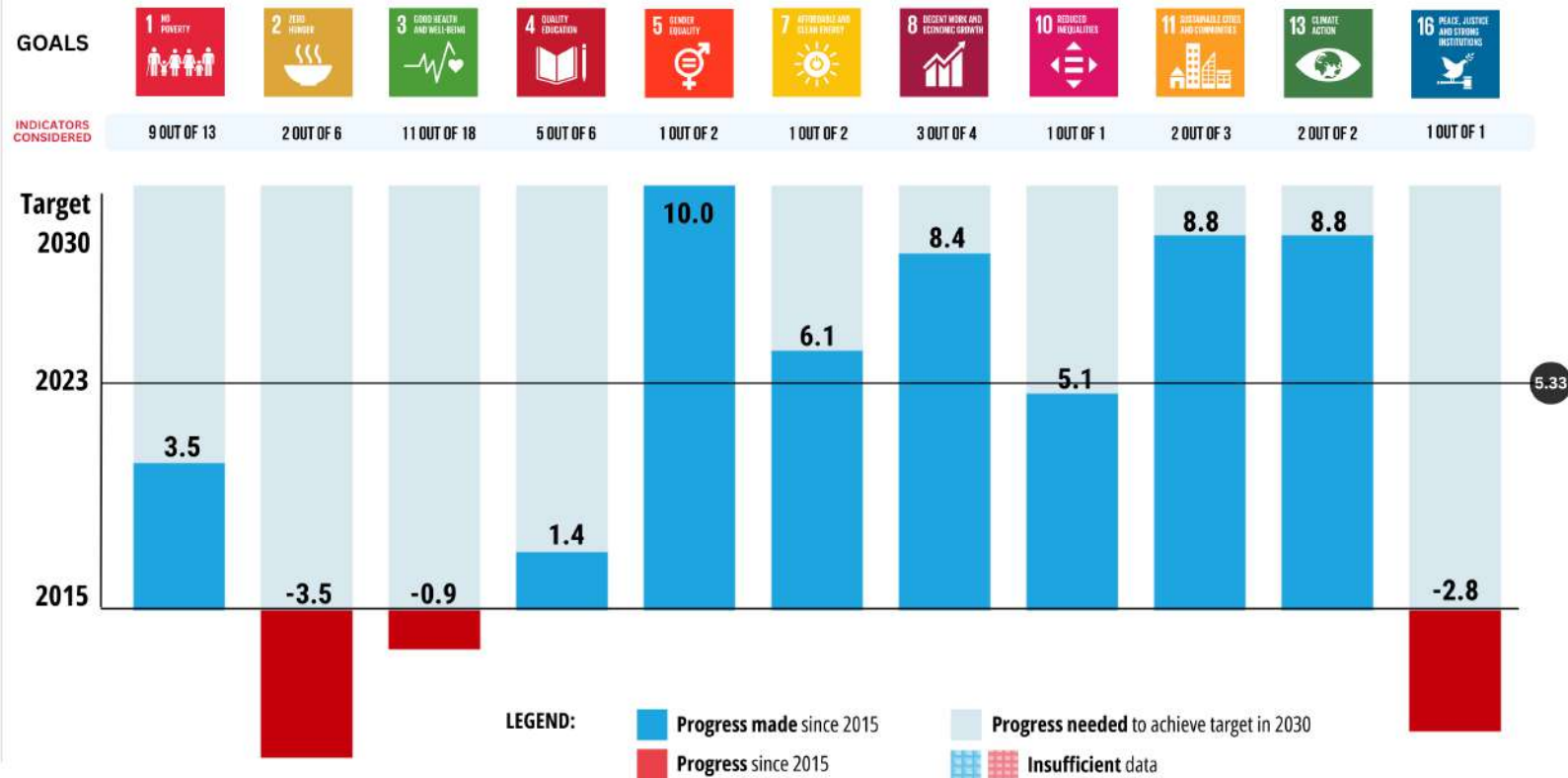
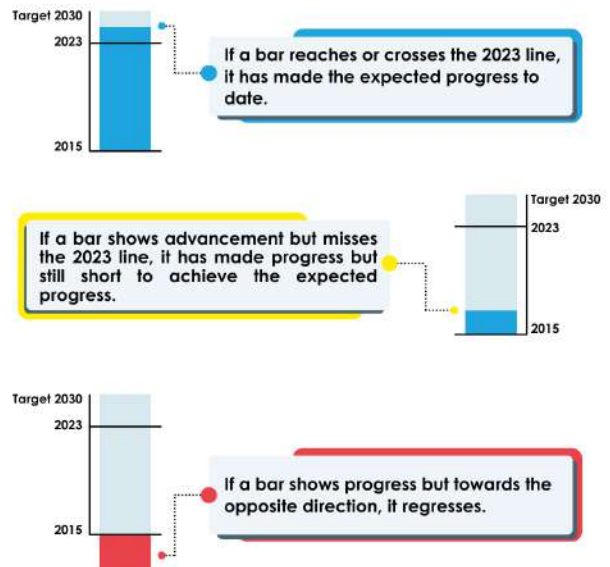
How much progress has been made since 2015?

- Assess the current state of progress by creating a linkage between the progress made since 2015 in relation to the progress needed to achieve target by 2030.
- Data requirement:** 2 or more data points since 2015 and 2030 Numerical Targets.



INTERPRETATION OF RESULTS

The length of each bar shows the progress of the country since 2015.



Notes:

- In analyzing the pace of progress, one must be cautious in comparing from the previous year since its estimation is affected by the number of indicators with updates and available disaggregation in a particular year. Hence, year-on-year comparison of the pace of progress should be handled carefully.
- The pace of progress results were based on the available Core Regional Sustainable Development Goals Indicators (CoRe-SDGI) collected by the PSA Central Office as of 08 November 2023, and the 2030 numerical targets at the national level.