

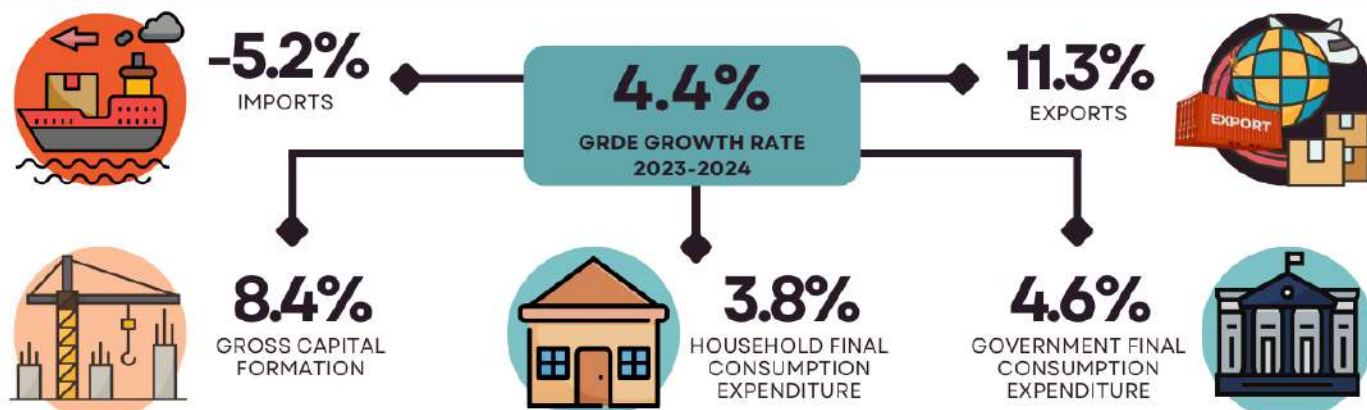
# 2024 GROSS REGIONAL DOMESTIC EXPENDITURE OF MIMAROPA REGION

AT CONSTANT 2018 PRICES

2025-IG-47

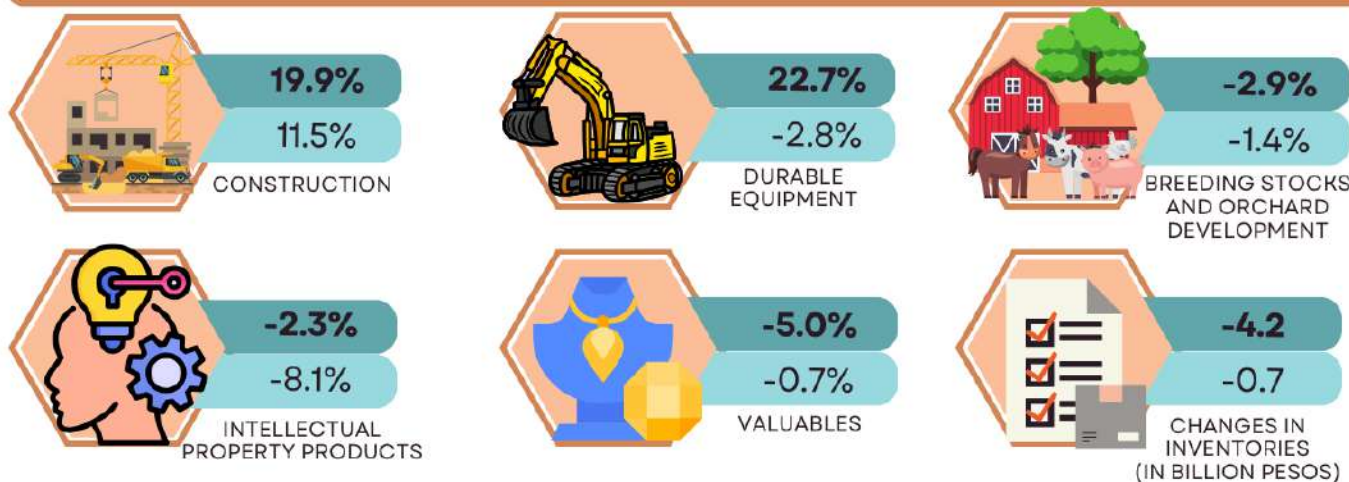
Gross Regional Domestic Expenditure (GRDE) is defined as the expenditure of residents of the region in the domestic territory plus their expenditure in other regions including the rest of the world.

## GROSS REGIONAL DOMESTIC EXPENDITURE, BY EXPENDITURE ITEM, GROWTH RATES: 2023-2024



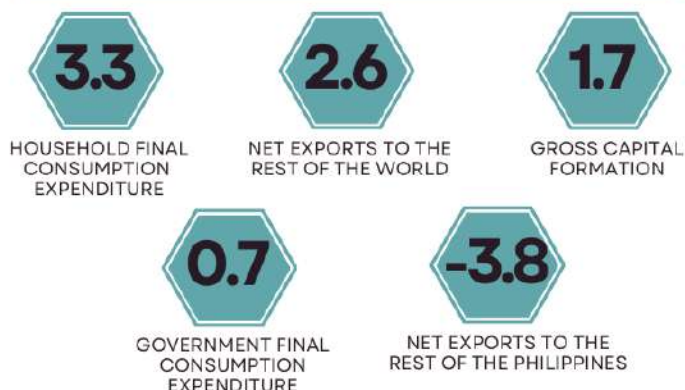
## GROSS CAPITAL FORMATION, GROWTH RATES

2022-2023 2023-2024



## CONTRIBUTION TO GROWTH, BY EXPENDITURE ITEM

IN PERCENTAGE POINTS, 2023 TO 2024



## PER CAPITA HOUSEHOLD FINAL CONSUMPTION EXPENDITURE

IN PHILIPPINE PESOS, 2022 TO 2024

