

PHILIPPINES

3.4
FEBRUARY 2024

2.9
JANUARY 2025

2.1
FEBRUARY 2025

MIMAROPA REGION

3.4
FEBRUARY 2024

2.4
JANUARY 2025

2.1
FEBRUARY 2025

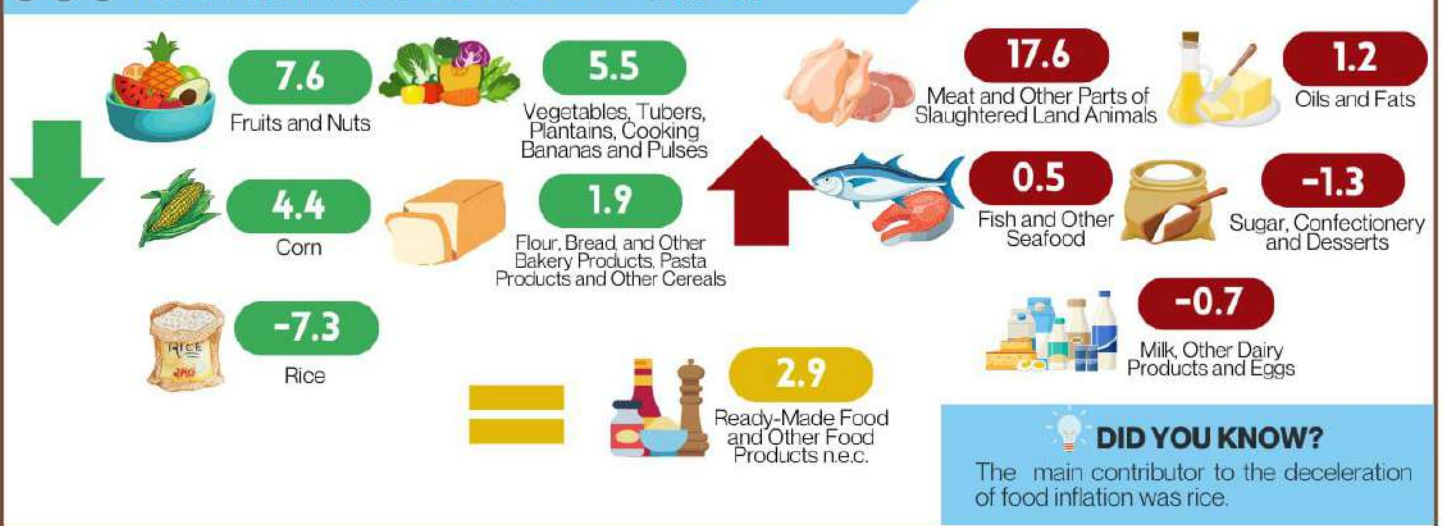
? The **INFLATION RATE** is the annual rate of change of the **CONSUMER PRICE INDEX**, expressed in percent.

INFLATION RATE BY COMMODITY GROUP



Note: ↓ decreased relative to January 2025 inflation ↑ increased relative to January 2025 inflation = same as/equal to January 2025 inflation

INFLATION RATE BY FOOD GROUP



PURCHASING POWER OF PESO: FEBRUARY 2024 TO FEBRUARY 2025

The **PURCHASING POWER OF PESO** shows how much the peso in the base period is worth in the current period. It is computed as the reciprocal of the CPI for the period under review, multiplied by 100.

