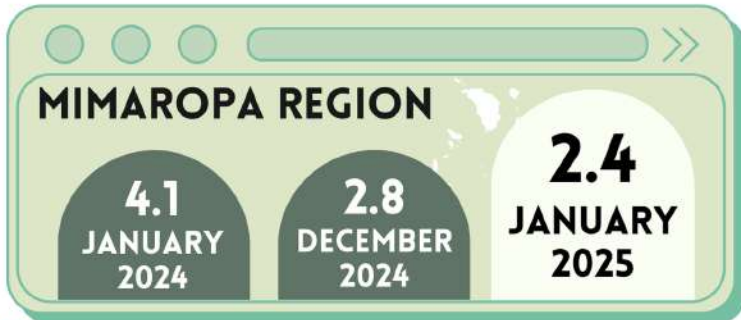


MIMAROPA REGION INFLATION RATE FOR BOTTOM 30% INCOME HOUSEHOLDS (2018=100) JANUARY 2025



? The **INFLATION RATE** is the annual rate of change of the **CONSUMER PRICE INDEX**, expressed in percent.

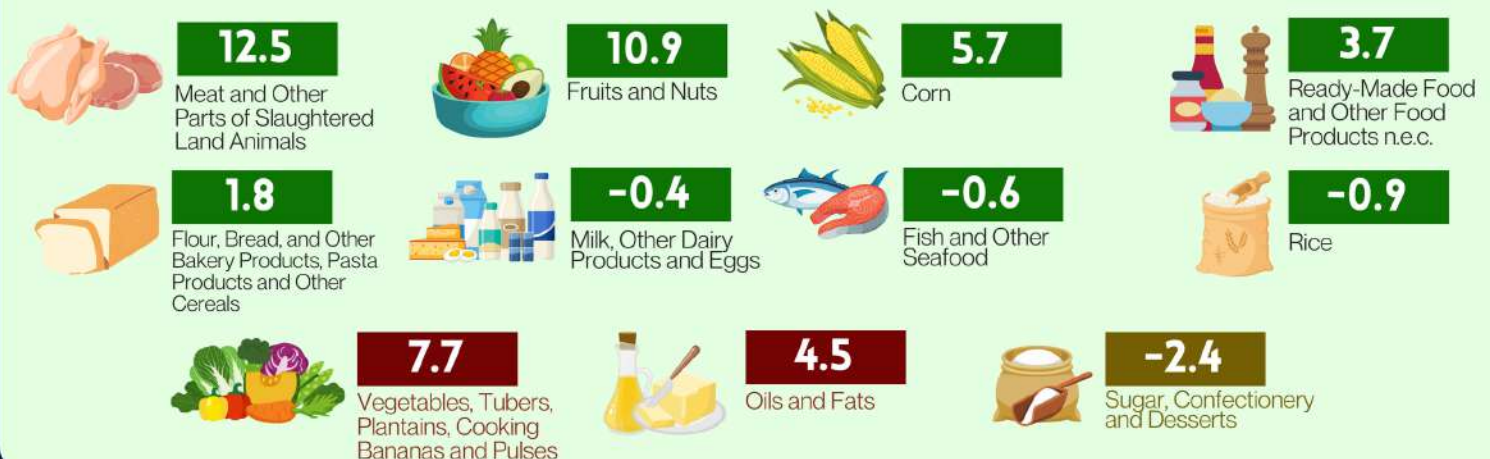
MAIN SOURCES OF DECELERATION: MIMAROPA REGION



INFLATION RATE BY COMMODITY GROUP



INFLATION RATE BY FOOD GROUP



Note: ● decreased relative to December 2024 inflation ● increased relative to December 2024 inflation ● same as/equal to December 2024 inflation

