

PHILIPPINES

3.7
MARCH
2024

2.1
FEBRUARY
2025

1.8
MARCH
2025

MIMAROPA REGION

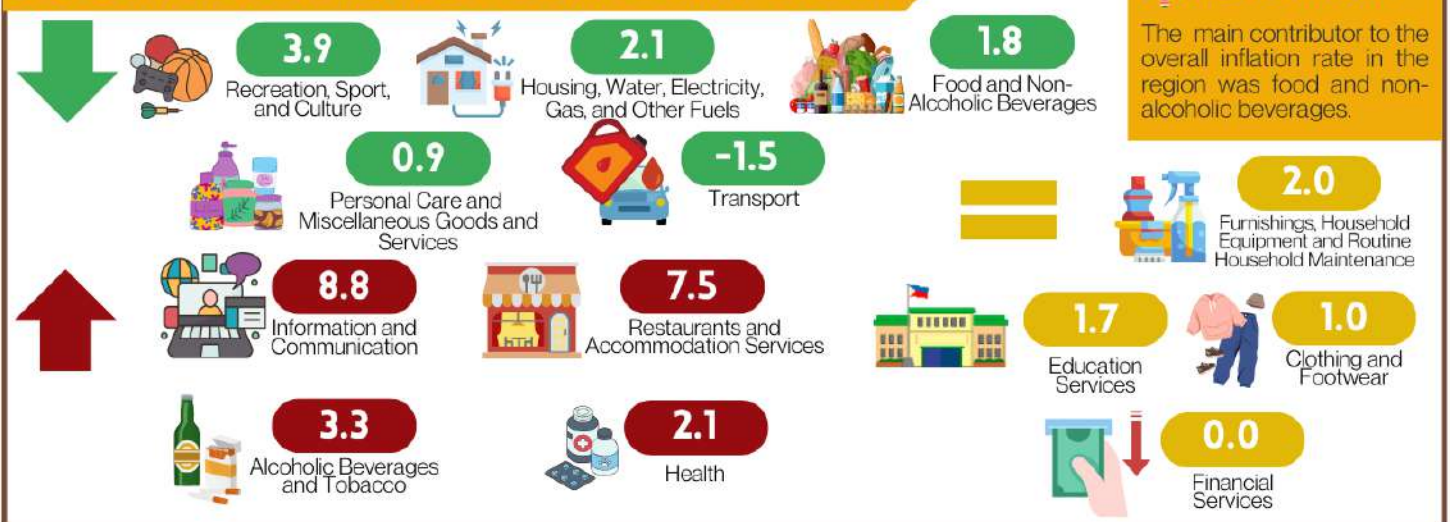
3.9
MARCH
2024

2.1
FEBRUARY
2025

2.1
MARCH
2025

? The **INFLATION RATE** is the annual rate of change of the **CONSUMER PRICE INDEX**, expressed in percent.

INFLATION RATE BY COMMODITY GROUP

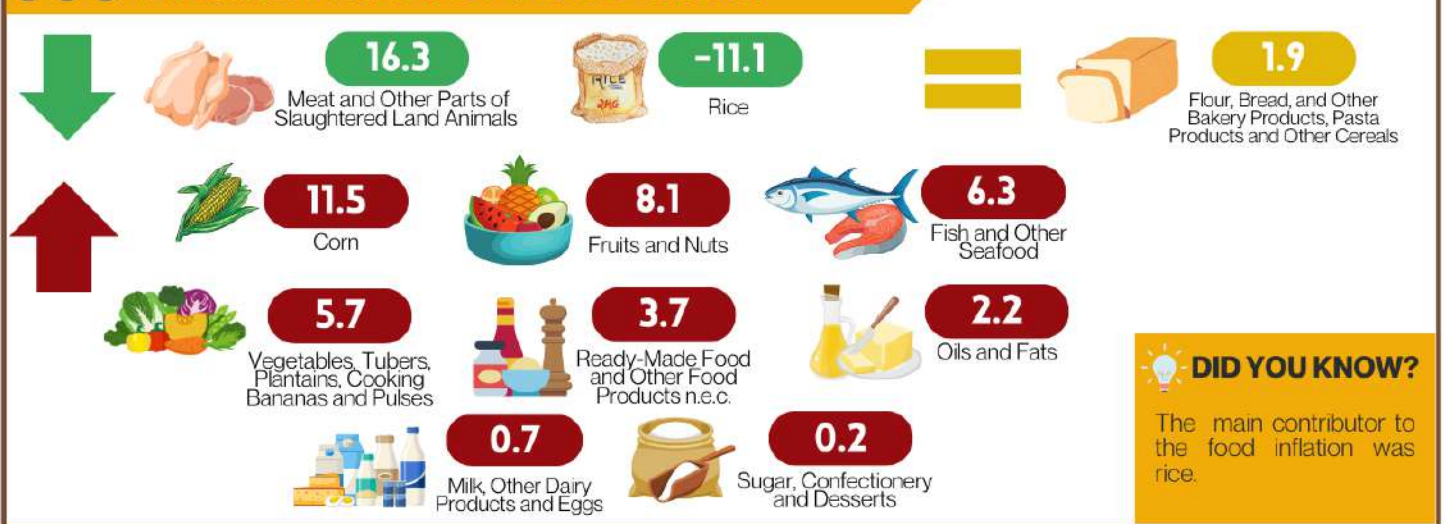


DID YOU KNOW?

The main contributor to the overall inflation rate in the region was food and non-alcoholic beverages.

Note: ↓ decreased relative to February 2025 inflation ↑ increased relative to February 2025 inflation = same as/equal to February 2025 inflation

INFLATION RATE BY FOOD GROUP



DID YOU KNOW?

The main contributor to the food inflation was rice.

PURCHASING POWER OF PESO: MARCH 2024 TO MARCH 2025

The **PURCHASING POWER OF PESO** shows how much the peso in the base period is worth in the current period. It is computed as the reciprocal of the CPI for the period under review, multiplied by 100.

