

NO. OF CASES OF REPORTED DISEASES

10,634

The number of reported cases of diseases in the MIMAROPA Region in 2022 increased to 10,634 (427.7%) from the 2,015 recorded cases in 2021.



GENDER DISTRIBUTION



47.9%
5,094 cases



52.1%
5,540 cases

TYPES AND PERCENT SHARE OF DISEASES



88.8%
Dengue
9,438 cases

In 2022, there was a significant increase of 527.5% in dengue cases, making it the most prevalent among all reported illnesses.



7.4%
Typhoid
784 cases



1.3%
Diarrhea
135 cases



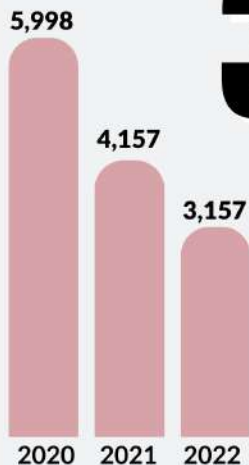
1.0%
Leptospirosis
109 cases



1.6%
Rotavirus, Measles, Cholera, Chikungunya, and Hepatitis
168 cases

Note: Details may not add up due to rounding.

NO. OF MALARIA CASES



3,157

The number of malaria cases in the MIMAROPA Region consistently decreased from 2020 to 2022.

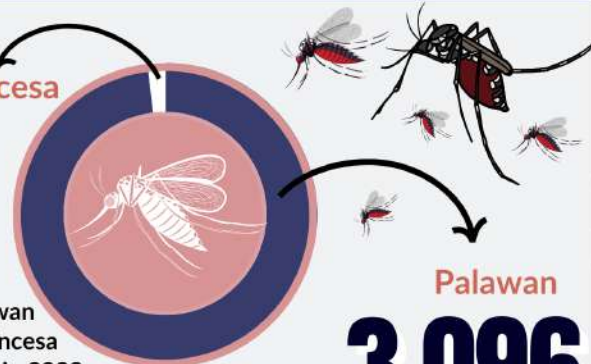


MALARIA INCIDENCE PER PROVINCE

City of Puerto Princesa

61

In MIMAROPA Region, only the province of Palawan and the City of Puerto Princesa recorded cases of malaria in 2022.



Palawan

3,096

Source: Department of Health MIMAROPA