



2020 AGRICULTURE AND FISHERIES VOLUME OF PRODUCTION IN PALAWAN

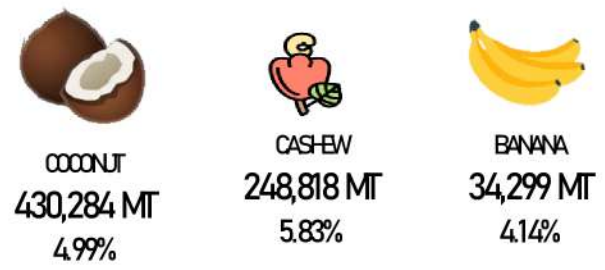
NOTE: RATE WAS COMPUTED AS PERCENT INCREASE/DECREASE OF 2020 AND 2019 AGRICULTURE AND FISHERIES PRODUCTION DATA

PALAY AND CORN PRODUCTION, AREA HARVESTED AND AVERAGE YIELD

PALAY / CORN	VOLUME OF PRODUCTION (IN METRIC TONS)	AREA HARVESTED (IN HECTARES)	YIELD (IN METRIC TONS PER HECTARES)
	387,170	97,215	3.98
	1.43%	0.18%	1.27%
	23,716	7,138	3.32
	3.90%	-0.45%	4.40%

Source: Philippine Statistic Authority (PSA), Palay and Corn Production Survey

MAJOR CROPS TOTAL VOLUME OF PRODUCTION 485,417 MT

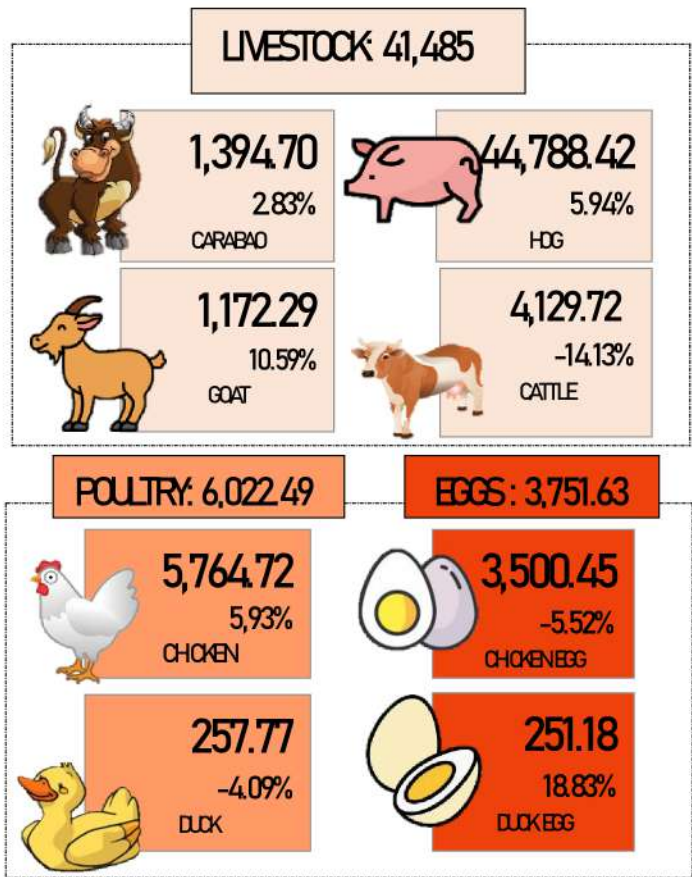


TEMPORARY CROPS TOTAL VOLUME OF PRODUCTION 26,714 MT



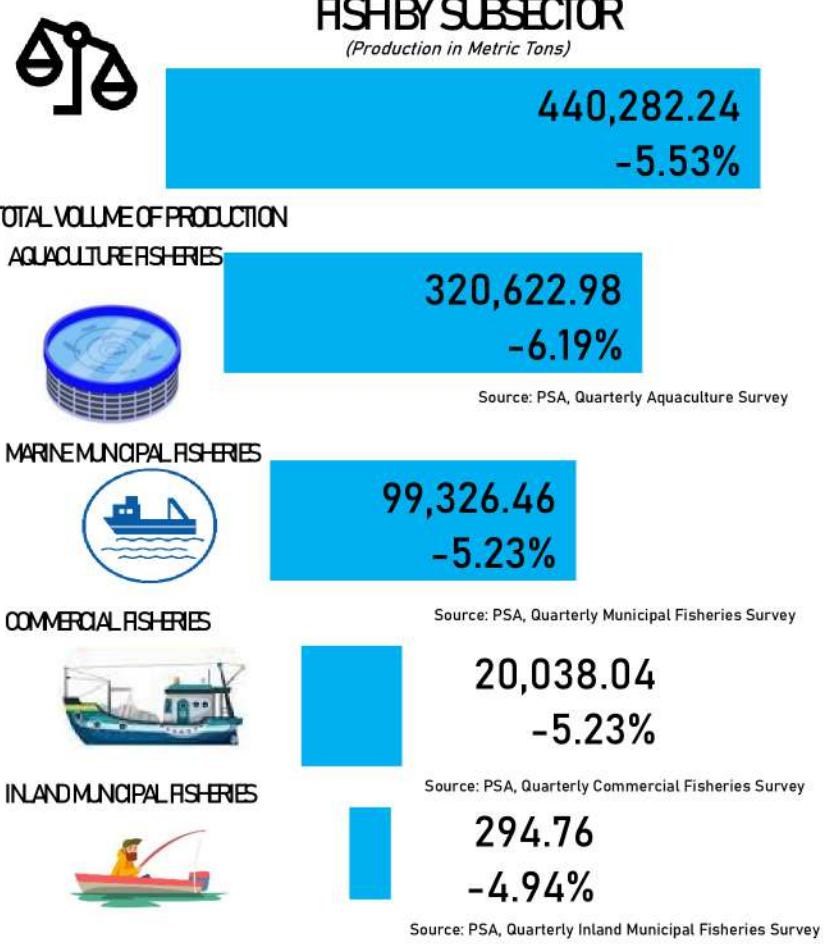
Source: PSA, Crops Production Survey

ANIMAL TYPE AND POULTRY PRODUCTS (Production in Metric Tons)



Source: Philippine Statistic Authority (PSA), Livestock and Poultry Survey

FISH BY SUBSECTOR (Production in Metric Tons)



Source: PSA, Quarterly Inland Municipal Fisheries Survey