

This file has been cleaned of potential threats.

To view the reconstructed contents, please SCROLL DOWN to next page.



Special Release

Summary Inflation Report of the City of Puerto Princesa Consumer Price Index (2018=100)

May 2023

Date of Release: 8 June 2023

Reference No. 2023-14

**Table A. Year-on-Year Inflation Rates: Philippines,
MIMAROPA, and the City of Puerto Princesa
All Items, In Percent
(2018=100)**

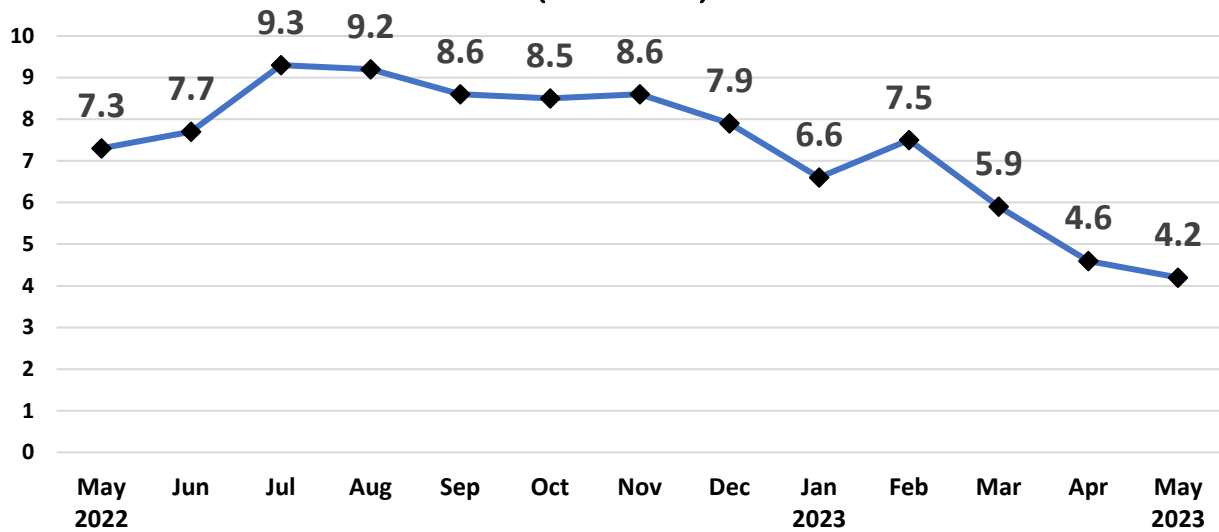
Area	May 2023	April 2023	May 2023	Year-to-date*
Philippines				
Headline	5.4	6.6	6.1	7.5
MIMAROPA				
Headline	5.3	7.8	7.2	8.4
City of Puerto Princesa				
Headline	7.3	4.6	4.2	5.8

Source: Retail Price Survey of Commodities for the Generation of Consumer Price Index
Philippine Statistics Authority

* Year-on-year change of average CPI for January to May 2023 vs. 2022



Figure 1. Headline Inflation Rates in the City of Puerto Princesa, All Items, In Percent (2018=100)



Source: Retail Price Survey of Commodities for the Generation of Consumer Price Index
Philippine Statistics Authority

City of Puerto Princesa

The **headline inflation** in the City of Puerto Princesa continued to slow down at **4.2** percent, from **4.6** percent in April 2023. In May 2022, the headline inflation was higher, at **7.3** percent. The average inflation rate for the first four months of the year stood at **5.8** percent, (Table A and Figure 1).

The decline in the City's inflation rate was driven primarily by the decline in the annual growth of Transport at **-2.4** percent from **2.3** percent in April 2023. This was followed by Food and Non-Alcoholic Beverages with an inflation rate of **4.6** percent from **5.2** percent in the previous month. The third driver is Alcoholic Beverages and Tobacco at **13.5** percent from **15.8** percent inflation last month (Table B).

Also, lower increments in the annual inflation rate were observed in the following commodities:

- a. Personal Care, and Miscellaneous Good and Services, **8.2** percent;
- b. Clothing and Footwear, **10.4** percent;
- c. Health, **3.8** percent;
- d. Furnishings, Household Equipment and Routine Household Maintenance, **8.0** percent; and
- e. Information and Communication, **1.4** percent.



On the contrary, higher increments were observed in the following commodity groups:

- a. Housing, Water, Electricity, Gas and Other Fuels, **1.1** percent;
- b. Restaurants and Accommodation Services, **11.1** percent; and
- c. Recreation, Sport and Culture, **10.8** percent.

Meanwhile, Education and Financial Services retained their previous month's inflation rates at **0.0** percent.

Table B. Year-on-Year Inflation Rates in City of Puerto Princesa, All Items, In Percent (2018=100)

Commodity Group	Inflation Rates		
	May '22	Apr '22	May '22
Food and Non-alcoholic Beverages	9.0	5.2	4.6
Alcoholic Beverages and Tobacco	8.9	15.8	13.5
Clothing and Footwear	5.6	10.9	10.4
Housing, Water, Electricity, Gas and other Fuels	4.4	(0.4)	1.1
Furnishings, Household Equipment and Routing Household Maintenance	3.8	8.4	8.0
Health	1.8	4.4	3.8
Transport	19.0	2.3	(2.4)
Information and Communication	0.1	1.5	1.4
Recreation, Sport, and Culture	1.9	10.2	10.8
Education Services	0.0	0.0	0.0
Restaurants and Accommodation Services	5.1	9.7	11.1
Financial Services	0.0	0.0	0.0
Personal Care, and Miscellaneous Goods and Services	4.0	9.0	8.2

Food inflation in May 2023 further decelerated to **4.1** percent from **4.8** percent in the previous month. In May 2022, the food index was higher at **9.5** percent inflation rate, (Table C).

The main drivers for the lower food inflation were Fish and Other Seafood at **-3.9** percent, from **5.0** percent in April 2023. This was followed by Milk, Other Dairy Products and Eggs at **10.1** percent inflation rate from **11.4** percent. The third driver to the slowdown is Oils and Fats at **2.3** percent inflation rate from **7.5** percent last month.



Further contributing to the slowdown were the lower indices observed in the following commodities:

- a. Sugar, Confectionery and Desserts, **32.4** percent;
- b. Meat and Other Parts of Slaughtered Land Animals, **5.0** percent;
- c. Flour, Bread, And Other Bakery Products, Pasta Products and Other Cereals, **12.3** percent;
- d. Ready-made Food and Other Food Products n.e.c., **8.5** percent; and
- e. Corn, **-3.7** percent.

On the other hand, the indices of the following commodity groups posted higher inflation rates during the month:


- a. Rice, **-3.3** percent;
- b. Vegetables, Tubers, Plantains, Cooking Bananas and Pulses **7.1** percent; and
- c. Fruits and Nuts, **17.8** percent.

Table C. Year-on-Year Inflation Rates in City of Puerto Princesa, By Food Group, In Percent (2018=100)

Food Commodity Group	Inflation Rates		
	May '22	Apr '22	May '22
Food	9.5	4.8	4.1
Cereals and cereal products	4.2	(0.6)	0.3
Cereals	3.8	(4.6)	(3.3)
Rice	3.9	(4.6)	(3.3)
Corn	0.8	(3.4)	(3.7)
Flour, Bread and other Bakery Products, Pasta Products and other Cereals	5.8	12.7	12.3
Meat and Other Parts of Slaughtered Land Animals	15.5	5.4	5.0
Fish and other seafood	17.6	5.0	(3.9)
Milk, Other Dairy Products and Eggs	2.8	11.4	10.1
Oils and Fats	12.4	7.5	2.3
Fruits and Nuts	6.9	4.3	17.8
Vegetables, Tubers, Plantains, Cooking Bananas and Pulses	15.7	6.4	7.1
Sugar, Confectionery, and Desserts	11.3	34.8	32.4
Ready-made Food and Other Food Products n.e.c.	5.5	8.9	8.5

**Table D. Year-on-Year Inflation Rates in City of Puerto Princesa,
All Items, In Percent
January 2020 – May 2023
(2018=100)**

Month	Inflation Rate			
	2020	2021	2022	2023
January	1.0	3.8	4.1	6.6
February	0.9	3.6	4.1	7.5
March	0.4	4.2	5.2	5.9
April	0.4	4.3	5.7	4.6
May	1.9	2.6	7.3	4.2
June	2.8	1.7	7.7	
July	3.0	1.3	9.3	
August	3.0	1.3	9.2	
September	3.2	0.8	8.6	
October	3.0	1.2	8.5	
November	3.8	1.7	8.6	
December	4.1	1.8	7.9	
Average	2.3	2.4	7.2	


MARIA LALAINÉ M. RODRIGUEZ
 Chief Statistical Specialist



Goldraz Properties Building, Malvar St., Brgy. San Miguel, Puerto Princesa City, Palawan 5300
 Telephone ☎ (048) 434 2092
 Email ✉ palawan@psa.gov.ph