

SPECIAL RELEASE

Summary Inflation Report Consumer Price Index for the Bottom 30% Income Households in Puerto Princesa City (2018=100)

March 2025

Date of Release: 08 April 2025

Reference No. 2025-SR-022

**Table A. Year-on-Year Inflation Rates for the Bottom 30% Income Households:
Philippines, MIMAROPA, and Puerto Princesa City
All Items, In Percent
(2018=100)**

Area	March 2024	February 2025	March 2025	Year-to-date*
Philippines	4.6	1.5	1.1	1.7
MIMAROPA	5.6	1.6	1.0	1.6
Puerto Princesa City	5.1	1.2	4.2	2.2

Source: Philippine Statistics Authority, Retail Price Survey of Commodities for the Generation of Consumer Price Index

* Year-on-year change of average CPI for March 2025 vs. 2024

Inflation rate for the bottom 30% income households in Puerto Princesa City increased to 4.2 percent in March 2025 from 1.2 percent in February 2025. In March 2024, inflation rate was posted at 5.1 percent. (Table A and Figure 1)

The main driver to the upward trend in the city's inflation for this income group in March 2025 was the higher year-on-year growth in the heavily-weighted food and non-alcoholic beverages at 5.6 percent from a 0.5 percent annual decline in February 2025. Also contributing to the increase to the overall inflation is restaurants and accommodation services at 11.3 percent in March 2025 from 8.7 percent in the previous month, and personal care and miscellaneous goods and services at 2.4 percent during the month from 2.0 percent in February 2025.

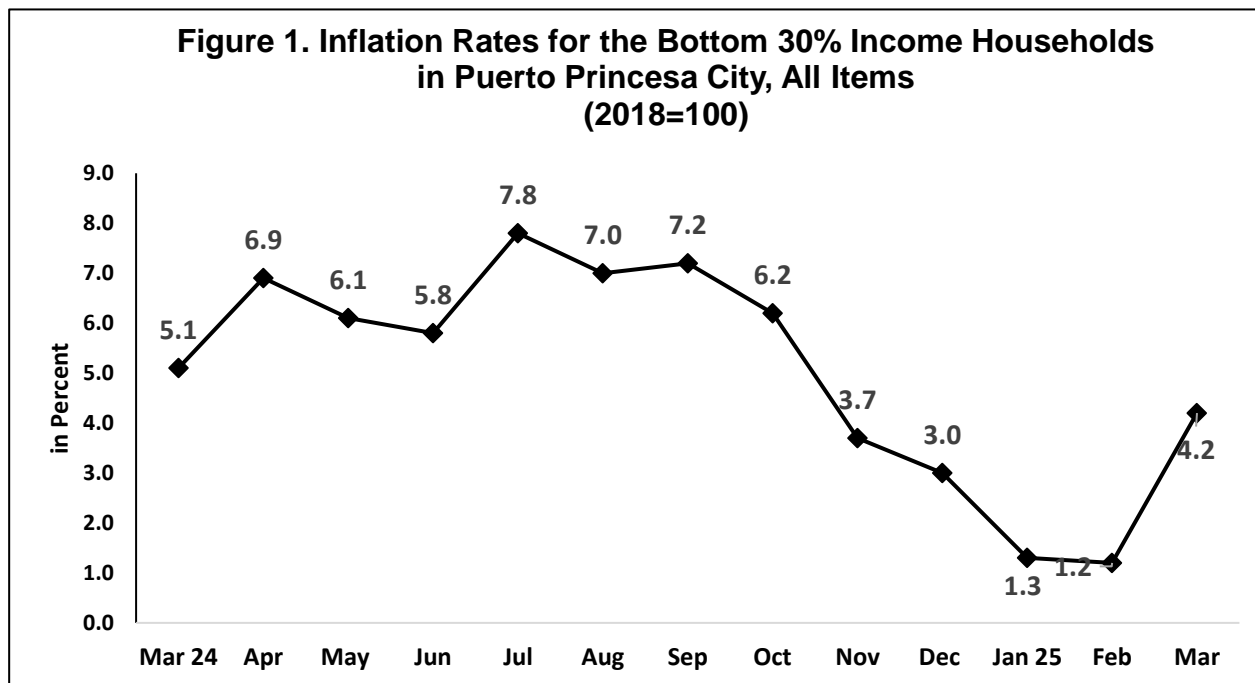
Also, higher inflation rates were noted in the indices of the following commodity groups:



Certificate Registration No. PHP
QMS 24 93 0203-067

Goldraz Properties Bldg., Malvar St., Brgy. San Miguel, Puerto Princesa City, Palawan 5300
Telephone ☎ (048) 434 2092 Email ✉ palawan@psa.gov.ph

- a.) Alcoholic beverages and tobacco, 1.0 percent from 0.7 percent;
- b.) Clothing and footwear, 1.0 percent from 0.8 percent;
- c.) Furnishings, household equipment and routine household maintenance, 1.7 percent from 1.5 percent; and
- d.) Recreation, sport and culture, 4.8 percent from 4.5 percent.



Source: Philippine Statistics Authority, Retail Price Survey of Commodities for the Generation of Consumer Price Index

**Table B. Year-on-Year Inflation Rates for the Bottom 30% Income Households
in Puerto Princesa City, All Items, In Percent
(2018=100)**

Commodity Group	Inflation Rates		
	Mar '24	Feb '25	Mar '25
Food and Non-alcoholic Beverages	3.7	(0.5)	5.6
Alcoholic Beverages and Tobacco	11.9	0.7	1.0
Clothing and Footwear	1.5	0.8	1.0
Housing, Water, Electricity, Gas and other Fuels	14.7	3.3	2.0
Furnishings, Household Equipment and Routing Household Maintenance	2.1	1.5	1.7
Health	4.5	4.3	3.3
Transport	(1.6)	1.3	(0.2)
Information and Communication	(5.2)	(1.4)	(1.4)
Recreation, Sport, and Culture	4.2	4.5	4.8
Education Services	0.9	0.0	0.0
Restaurants and Accommodation Services	3.1	8.7	11.3
Financial Services	(0.3)	0.0	0.0
Personal Care, and Miscellaneous Goods and Services	2.5	2.0	2.4

Source: Philippine Statistics Authority, Retail Price Survey of Commodities for the Generation of Consumer Price Index

In contrast, lower annual growth rates were noted in the indices of housing, water, electricity, gas and other fuels, health, and transport at 2.0 percent, 3.3 percent, and a 0.2 percent annual decline, respectively in March 2025 from their corresponding February 2025 rates of 4.3 percent, 1.3 percent, and 1.3 percent.

Further, the indices of the information and communication, education services, and financial services retained their February 2025.

Table C. Year-on-Year Inflation Rates for the Bottom 30% Income Households in Puerto Princesa City, By Food Group, In Percent (2018=100)

Food Commodity Group	Inflation Rates		
	Mar '24	Feb '25	Mar '25
Food	3.7	(0.8)	5.6
Cereals and cereal products	13.4	(8.3)	(1.4)
Cereals	16.7	(10.2)	(2.3)
Rice	16.7	(10.4)	(2.3)
Corn	17.5	1.9	4.5
Flour, Bread and other Bakery Products, Pasta Products and other Cereals	(1.7)	2.8	3.1
Meat and Other Parts of Slaughtered Land Animals	2.9	7.0	9.1
Fish and other seafood	(7.5)	4.9	24.2
Milk, Other Dairy Products and Eggs	0.5	2.7	3.1
Oils and Fats	(8.1)	3.9	6.0
Fruits and Nuts	2.8	12.1	12.9
Vegetables, Tubers, Plantains, Cooking Bananas and Pulses	(9.0)	7.6	7.6
Sugar, Confectionery, and Desserts	(6.7)	0.5	1.6
Ready-made Food and Other Food Products n.e.c.	2.5	4.5	4.5

Source: Philippine Statistics Authority, Retail Price Survey of Commodities for the Generation of Consumer Price Index

Food inflation for the bottom 30% income households in Puerto Princesa City moved at a faster pace of 5.6 percent in March 2025 from a 0.8 percent annual decline in the previous month. In March 2024, its annual increase was observed at 3.7 percent. (Table C)

The uptrend in the food inflation in the province was mainly due to the faster growth in the rice index at an annual decline of 2.3 percent during the month from a 10.4 percent annual decrease in the previous month. Higher inflation rates were also noted in March 2025 in the indices of fish and other seafood at 24.2 percent and meat and other parts of slaughtered land animals at 9.1 percent from their corresponding February 2025 inflation rates of 4.9 percent and 7.0 percent, respectively.

Moreover, higher annual increases were also noted in the following food groups:

- a. Corn, 4.5 percent from 1.9 percent;


- b. Flour, bread and other bakery products pasta products and other cereals, 3.1 percent from 2.8 percent;
- c. Milk, other dairy products and eggs, 3.1 percent from 2.7 percent;
- d. Oils and fats, 6.0 percent from 3.9 percent;
- e. Fruits and nuts, 12.9 percent from 12.1 percent; and
- f. Sugar, confectionery and desserts, 1.6 percent from 0.5 percent.

Further, vegetables, tubers, plantains, cooking bananas and pulses and ready-made food and other food products n.e.c maintained their previous month rates.

Table D. Year-on-Year Inflation Rates for the Bottom 30% Income Households in Puerto Princesa City, All Items, In Percent
January 2022 – March 2025
(2018=100)

Month	Inflation Rate			
	2022	2023	2024	2025
January	4.5	8.2	4.9	1.3
February	4.2	8.8	4.8	1.2
March	4.8	6.8	5.1	4.2
April	5.5	5.2	6.9	
May	7.4	4.8	6.1	
June	8.2	5.2	5.8	
July	10.4	3.5	7.8	
August	10.5	3.4	7.0	
September	9.9	4.2	7.2	
October	10.0	5.1	6.2	
November	10.0	5.3	3.7	
December	9.7	5.6	3.0	
Average	7.9	5.5	5.7	

Source: Philippine Statistics Authority, Retail Price Survey of Commodities for the Generation of Consumer Price Index


DONNA MARIE D. MOBE
 (Supervising Statistical Specialist)
 Officer-in-Charge
 Palawan Provincial Statistical Office

Technical Notes

Consumer Price Index is an indicator of the change in the average prices of a fixed basket of goods and services commonly purchased by households relative to a base year.

- **Market Basket** is a sample of goods and services, which is meant to represent the totality of all the goods and services purchased by households relative to a base year.
 - To determine the commodities that will form the market basket for the 2018-based CPI, the Survey of Key Informants (SKI) was conducted in March 2021. The survey, which was conducted nationwide to store managers, sellers or proprietors, obtained information on the most commonly purchased of goods and availed of services by the households.
 - The commodities in the 2018-based CPI market basket are grouped/classified according to the 2020 Philippine Classification of Individual Consumption According to Purpose (PCOICOP) which is based on the United Nations COICOP. Meanwhile, the commodities in the 2012-based CPI market basket used the 2009 PCOICOP version of classification of commodities.
- **Base year** is a reference period, usually a year, at which the index number is set to 100. It is the reference point of the index number series. The CPI is rebased from base year 2012 to base year 2018.
- **Inflation Rate** is the annual rate of change or the year-on-year change in the Consumer Price Index (CPI).
- **CPI for Bottom 30%** is an indicator of the change in the average prices of good and services commonly purchased by consumers whose per capita income fall below the bottom 30%.