

## ALL INCOME HOUSEHOLDS

6.1  
2022

6.9  
2023

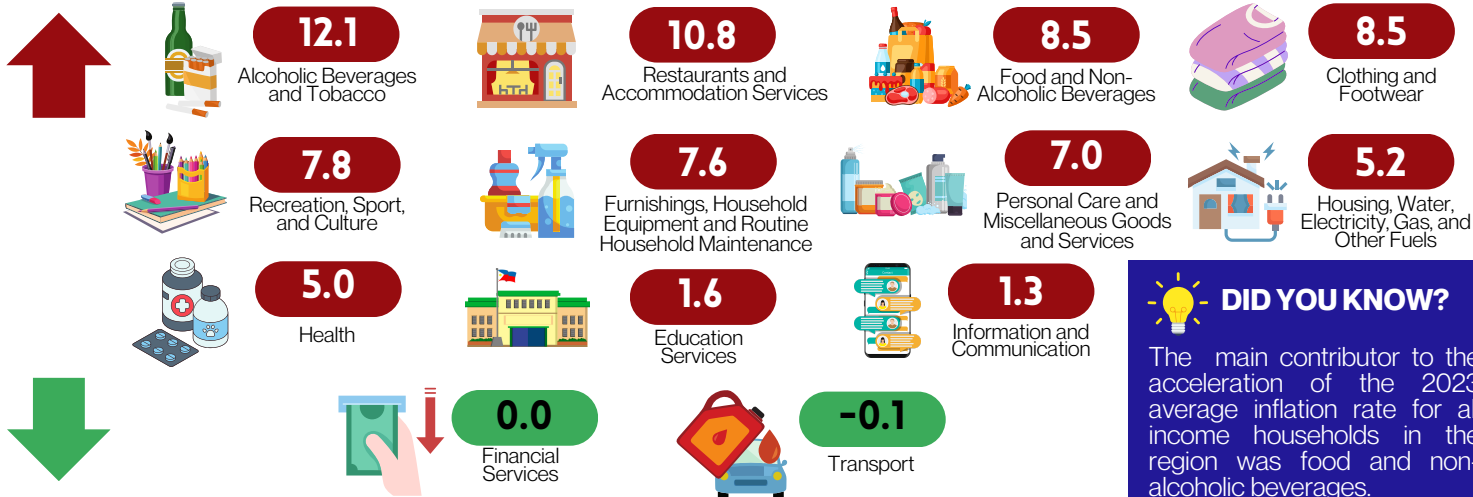
## BOTTOM 30% INCOME HOUSEHOLDS

6.5  
2022

7.9  
2023

**?** The **INFLATION RATE** is the annual rate of change of the **CONSUMER PRICE INDEX (CPI)**, expressed in percent.

### INFLATION RATE BY COMMODITY GROUP FOR ALL INCOME HOUSEHOLDS



#### DID YOU KNOW?

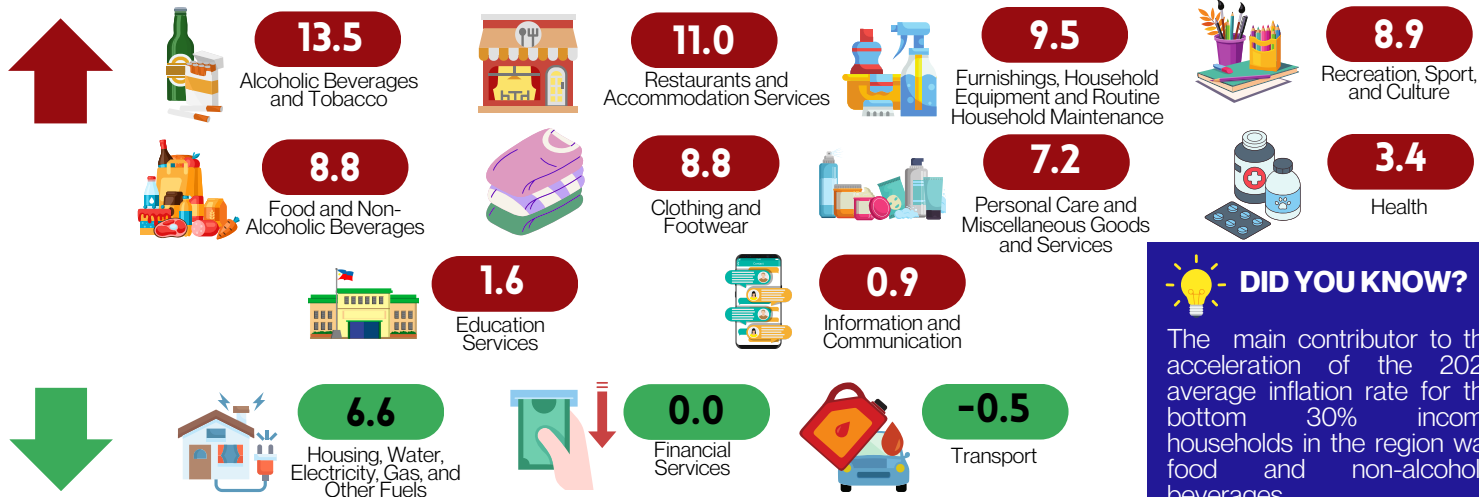
The main contributor to the acceleration of the 2023 average inflation rate for all income households in the region was food and non-alcoholic beverages.

**Note:** ↓ decreased relative to 2022 inflation

↑ increased relative to 2022 inflation

▭ same as/equal to 2022 inflation

### INFLATION RATE BY COMMODITY GROUP FOR BOTTOM 30% HOUSEHOLDS



#### DID YOU KNOW?

The main contributor to the acceleration of the 2023 average inflation rate for the bottom 30% income households in the region was food and non-alcoholic beverages.

## PURCHASING POWER OF PESO: 2022 TO 2023

The **PURCHASING POWER OF PESO** shows how much the peso in the base period is worth in the current period. It is computed as the reciprocal of the CPI for the period under review, multiplied by 100.

