

2023 VITAL STATISTICS REPORT

in the MIMAROPA Region

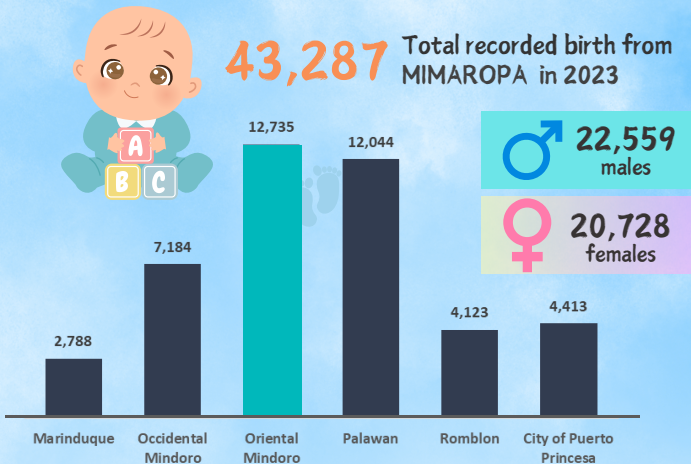


Reference No. 2025-IG-39



The data on the number of births, marriages and deaths (vital events) presented in this infographic were obtained from the vital events registered either timely or belatedly, at the appropriate Office of the City/Municipal Civil Registrar throughout the country and subsequently submitted for encoding to the Office of the Civil Registrar General through the Provincial Statistical Offices (PSOs) of the Philippine Statistics Authority (PSA).

TOTAL REGISTERED LIVE BIRTHS



MONTHS WITH THE MOST RECORDED BIRTH



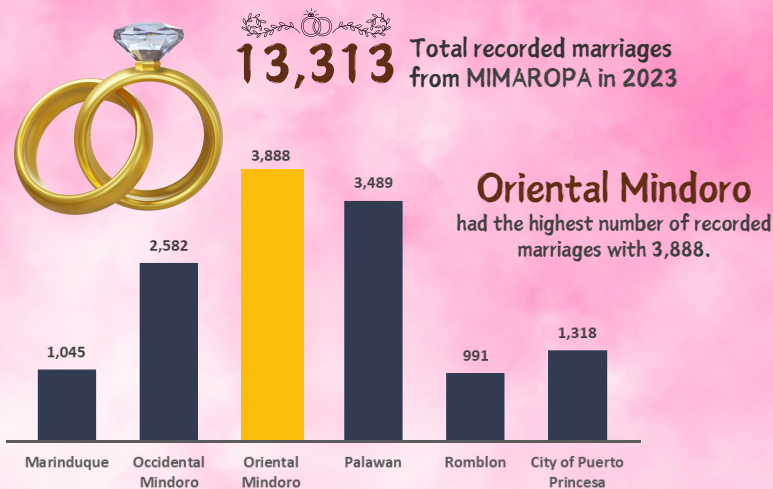
Physicians

were the most common attendant at birth with 29,009, followed by Midwife with 8,531 cases.

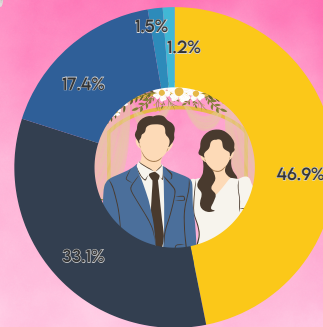
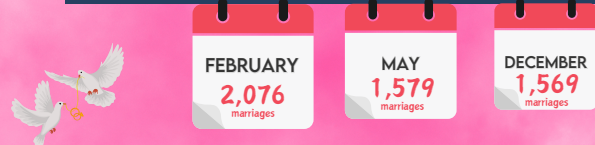
Health Facilities

were the most prevalent site for birth delivery with 37,361, followed by Home with 5,224 cases.

TOTAL MARRIAGE PER PROVINCE



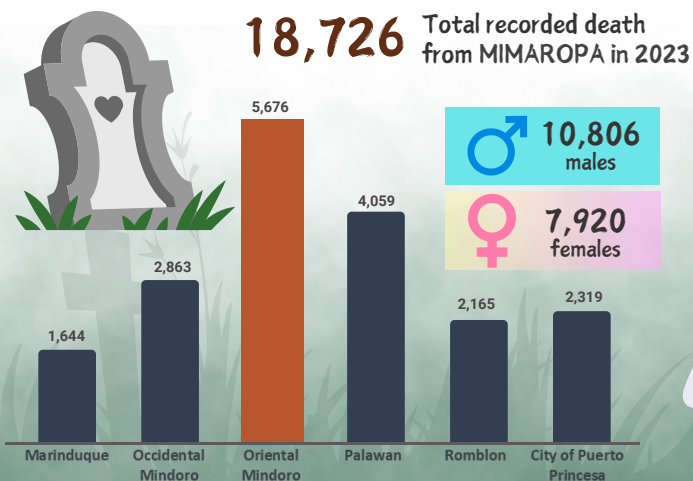
MONTHS WITH THE MOST RECORDED MARRIAGE



Civil Ceremony

was the most common form of marriage ceremony with 6,238, followed by Roman Catholic with 4,402 cases.

TOTAL REGISTERED DEATHS



MONTHS WITH THE MOST RECORDED DEATHS



Home

was the leading site of occurrence of death among MIMAROPAns with 11,254, followed by Health facilities with 7,232 cases.

Hospital Authority

was the most common attendant of deaths recorded in the region with 476, followed by Private Physician with 12 and Public Health Officer with 11 cases.

