

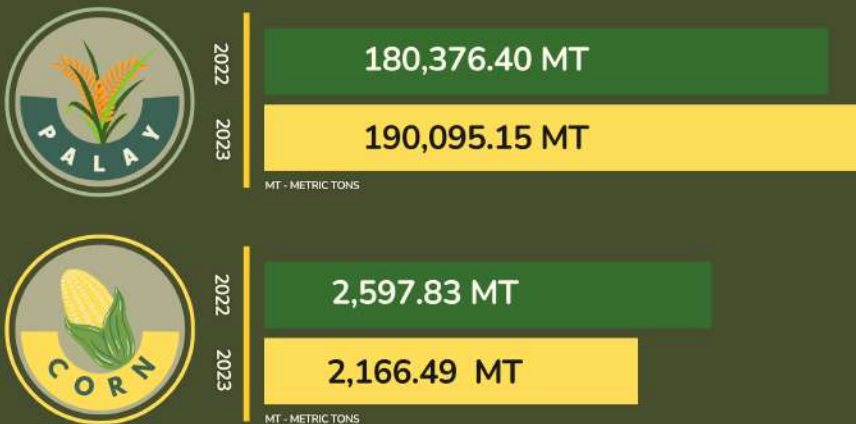
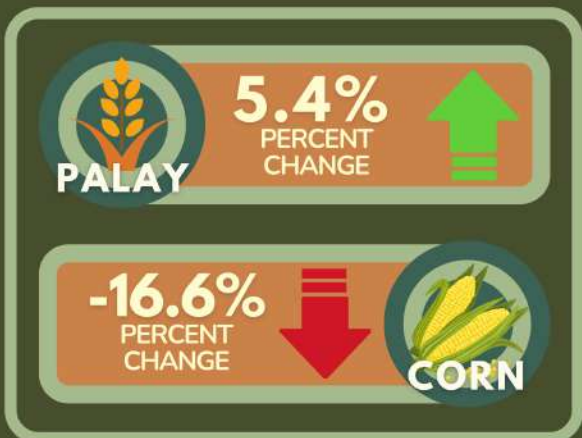
PALAY & CORN SITUATION IN ORIENTAL MINDORO SECOND SEMESTER 2023



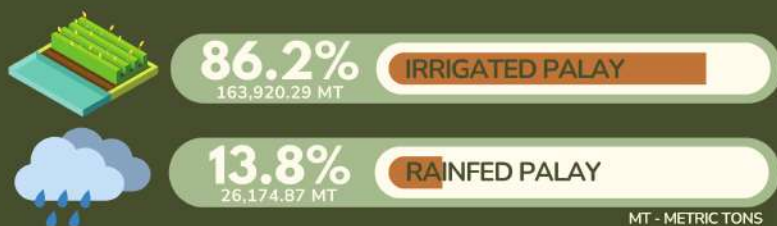
Release Date: 14 March 2024
Reference No.: 2024-IG-010

VOLUME OF PRODUCTION

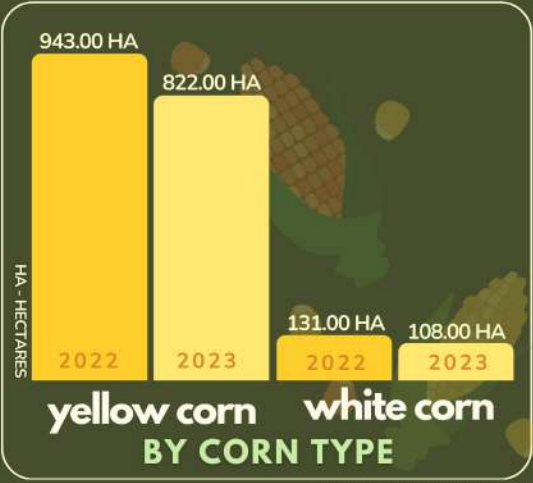
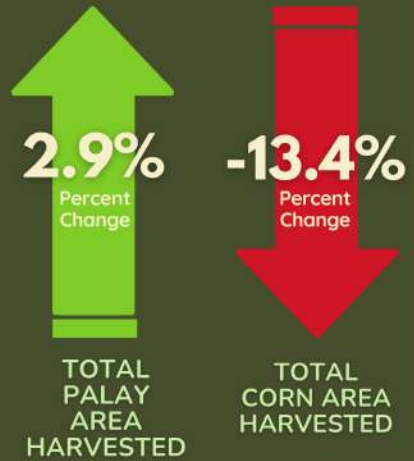
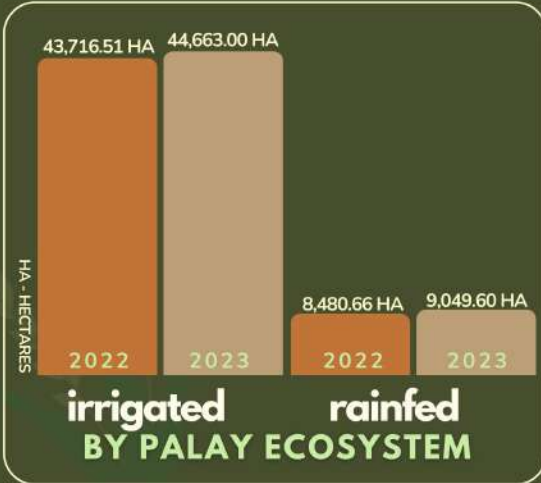
GROWTH RATE, 2022 - 2023



PERCENT SHARE TO TOTAL PRODUCTION: 1st Sem 2023



AREA HARVESTED



Source: Philippine Statistics Authority
vectors and images from canva and google

TECHNICAL NOTES

Data on crops presented in this special release were obtained from the Palay and Corn Production Survey (PCPS) conducted by the Philippine Statistics Authority (PSA)-Provincial Statistical Office (PSO) in the province. The respondents of the survey were palay farmers, corn farmers, farming households, and non-farming households. The generated quarterly production of all sectors was included in the quarterly data review and validation. After data validation, production estimates are made available to data users.