

2024 Social Services Statistics

MIMAROPA REGION



1,727,325
Unduplicated Clients

DSWD served across its various programs and services.

FAMILIES

991,238



SENIOR CITIZEN

558,002



CHILDREN

177,939

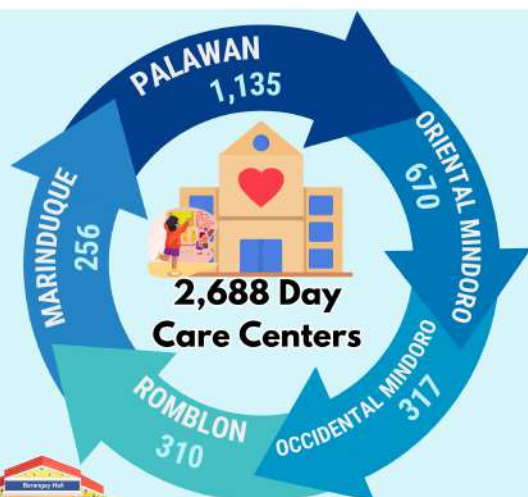
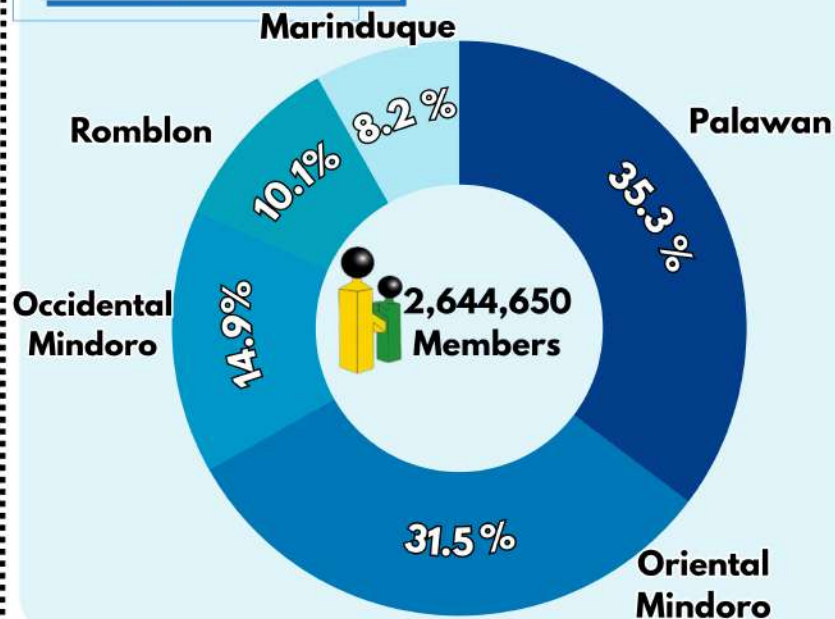


YOUTH

146



**Distribution of PhilHealth Members
By Province**



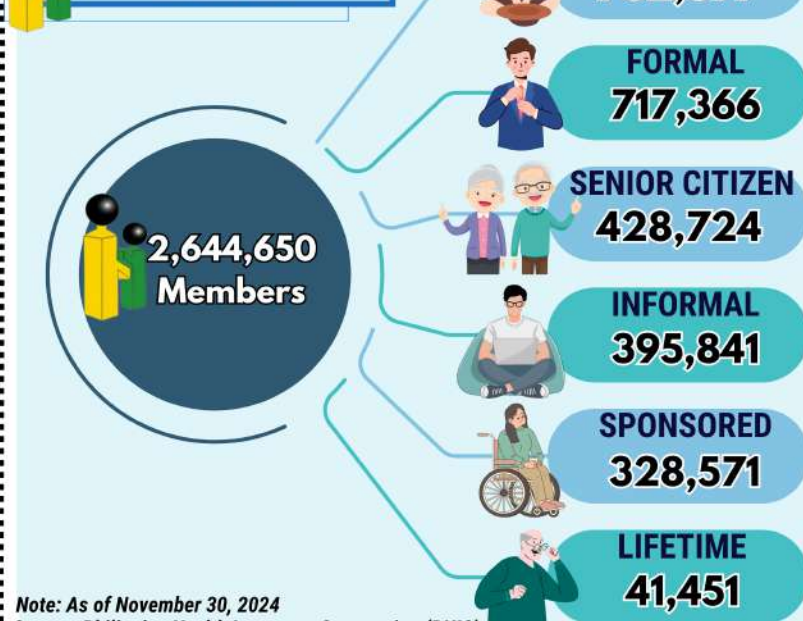
The region had 2,688 Day Care Centers distributed across all **1,460 barangays**.

**Number of Cases of Child Abuse
Social Welfare Programs**

Nearly two in every three abused children in the region were boys. These were addressed through community-based social welfare programs.



**Number of PhilHealth Members
by Category**



Note: As of November 30, 2024

Source: Philippine Health Insurance Corporation (PHIC)



194,960 Families
benefited from Disaster
Relief Assistance



154,811 Children

enrolled in Child Development Centers (CDC) and Supervised Neighborhood Play (SNPs) initiatives across the region.



Source: Department of Social Welfare and Development (DSWD)

Source: Department of Social Welfare and Development (DSWD)



REPUBLIC OF THE PHILIPPINES
PHILIPPINE STATISTICS AUTHORITY
REGIONAL STATISTICAL SERVICES OFFICE MIMAROPA



For Technical Inquiries:

rssomimaropa@psa.gov.ph

rssomimaropasocd@psa.gov.ph



www.psa.gov.ph



Contact us:

(43) 470-0598

(43) 286-7491