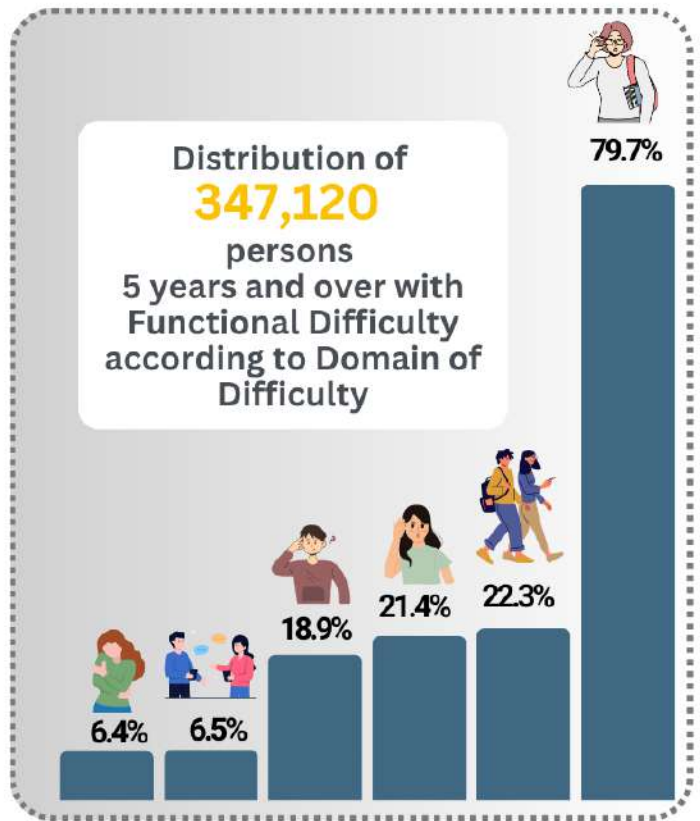
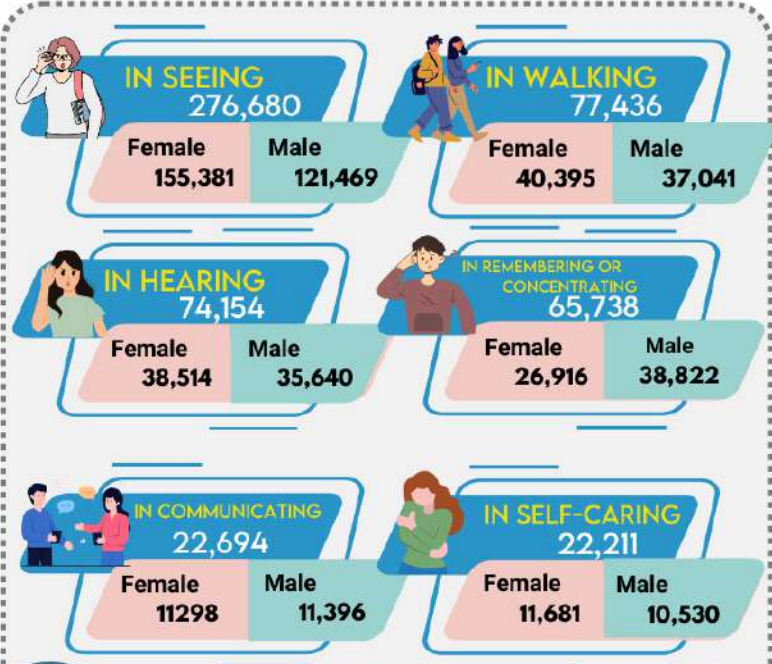
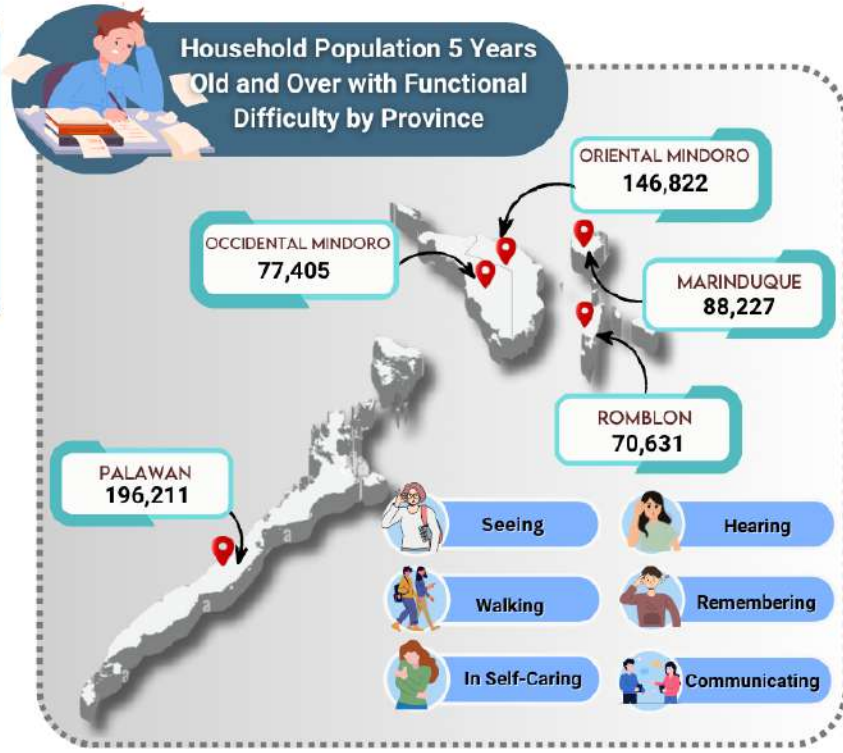


The 2020 Census of Population and Housing adheres to the Washington Group Short Set on Functioning (WG-SS), advocating for the concept of functional difficulty. This questionnaire comprises inquiries aimed at assessing the level of participation of individuals with disabilities in comparison to those without disabilities.

In the MIMAROPA region, the total population residing in households with members aged 5 years and older is **2,880,314**. Out of this population, **347,120** persons face functional difficulties, which represents approximately **12.1%** of the total population. Conversely, **2,532,361** persons do not experience any functional challenges, making up about **87.9%** of the population. Furthermore, there are **833** persons who did not provide information regarding their functional status.



Household Population 5 Years and Over by Domain of Functional Difficulty

Source: Philippines Statistics Authority (PSA)