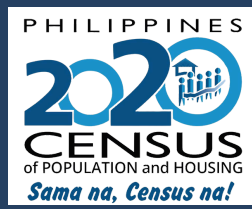


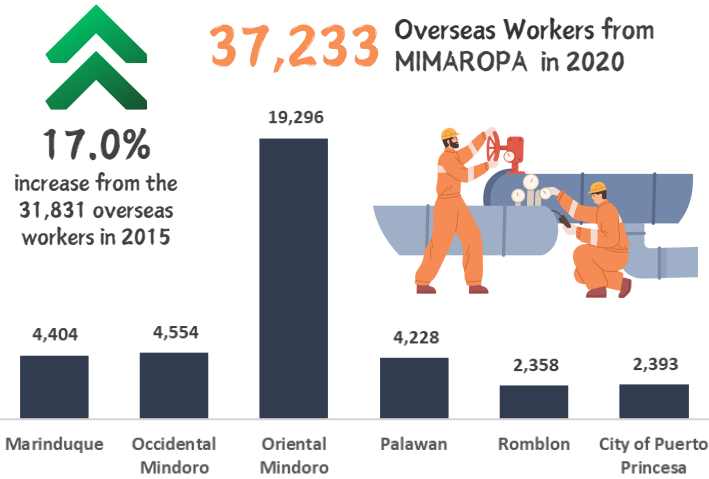
DEMOGRAPHIC CHARACTERISTICS OF OVERSEAS WORKERS

from the MIMAROPA Region

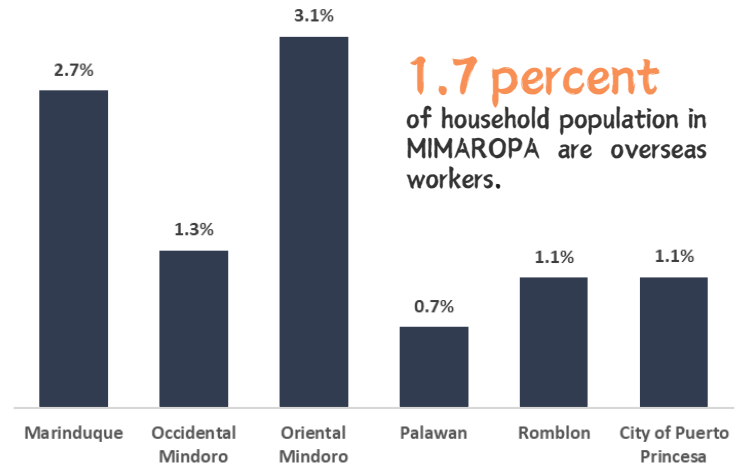


An **overseas worker** is one who is currently out of the country due to an overseas employment. He/she may or may not have a specific work contract or may be presently at home on vacation but has an existing overseas employment to return to.

OVERSEAS WORKER POPULATION IN MIMAROPA: 2020



PERCENT SHARE OF OVERSEAS WORKERS TO PROVINCE / HIGHLY URBANIZED CITY'S HOUSEHOLD POPULATION



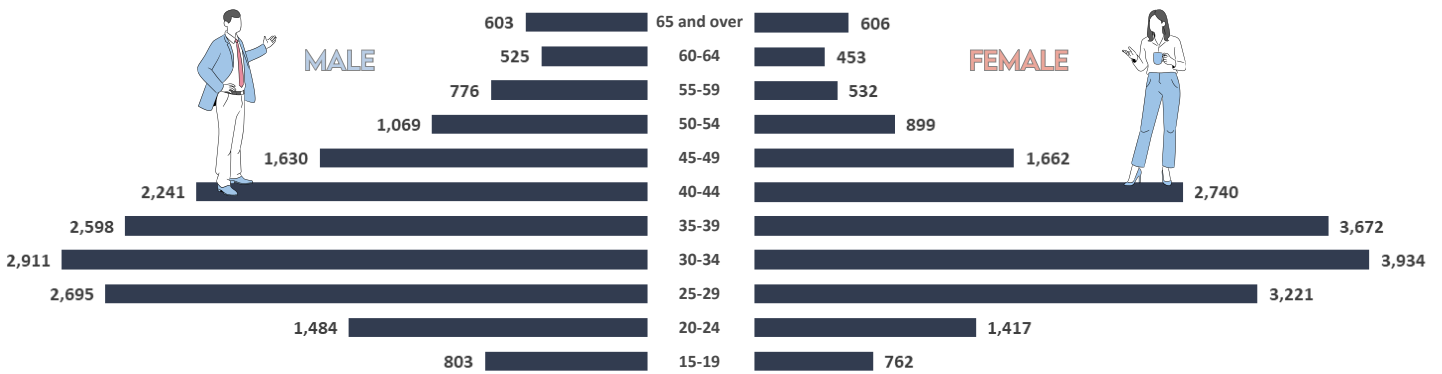
AGE-SEX POPULATION DISTRIBUTION OF OVERSEAS WORKERS IN MIMAROPA

The overseas worker population of MIMAROPA in 2020 translated to a sex ratio of **87 males per 100 females.**

46.6% (17,335) Male Overseas Workers

53.4% (19,898) Female Overseas Workers

The highest representation of overseas workers in terms of age group falls between **30 to 34 years old.**



OVERSEAS WORKER POPULATION BY HIGHEST EDUCATIONAL ATTAINMENT

