

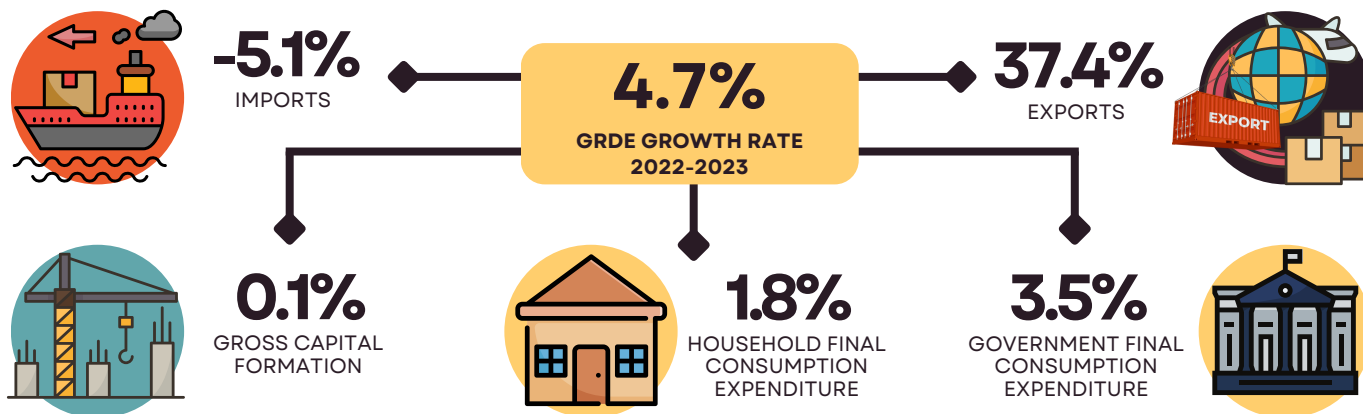
2023 GROSS REGIONAL DOMESTIC EXPENDITURE OF MIMAROPA REGION

AT CONSTANT 2018 PRICES

2024-IG-27

Gross Regional Domestic Expenditure (GRDE) is defined as the expenditure of residents of the region in the domestic territory plus their expenditure in other regions including the rest of the world.

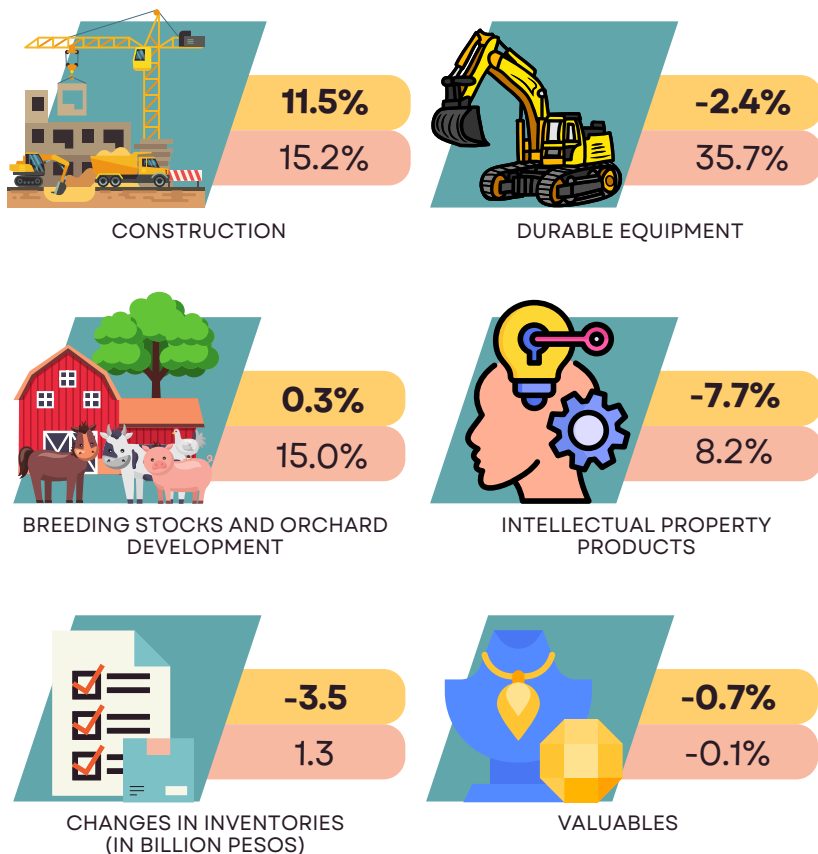
GROSS REGIONAL DOMESTIC EXPENDITURE, BY EXPENDITURE ITEM, GROWTH RATES: 2022-2023



GROSS CAPITAL FORMATION RATE

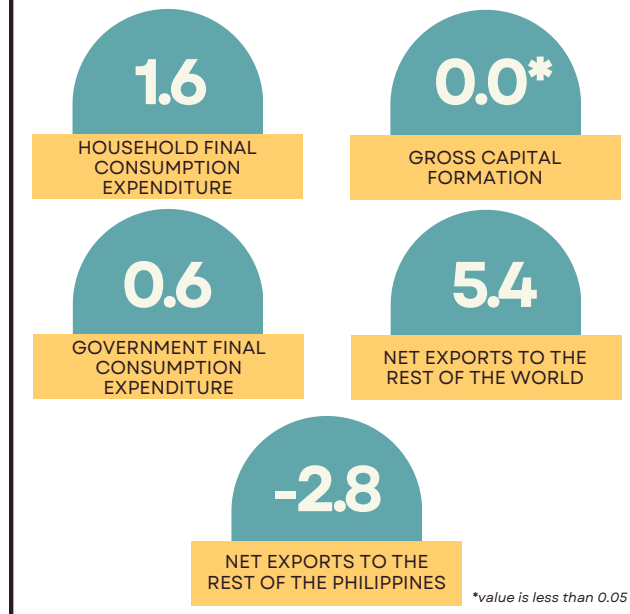
2021-2022

2022-2023



CONTRIBUTION TO GROWTH, BY EXPENDITURE ITEM

IN PERCENTAGE POINTS, 2022 TO 2023



PER CAPITA HOUSEHOLD FINAL CONSUMPTION EXPENDITURE

IN PHILIPPINE PESOS, 2021 TO 2023

