

GAINFUL WORKERS

in the MIMAROPA Region



Reference No.: 2025-IG-45

A gainful worker is someone who has worked at least 10 hours a week for six months (or 26 weeks) in the past year, including vacations or sick leave. This includes work for pay, profit from a business or farm, or unpaid work in a family business.

TOTAL NUMBER OF GAINFUL WORKERS

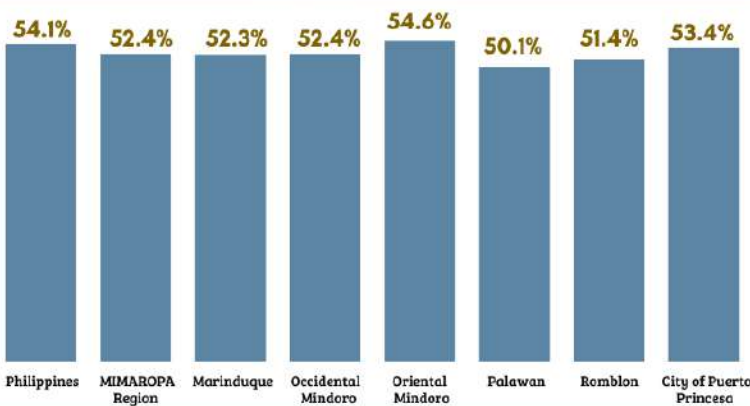
1,134,950 PERSONS

out of 2,166,403 household population 15 years and over

Female
30.0%

Male
70.0%

PROPORTION HOUSEHOLD POPULATION 15 YEARS OLD AND OVER WITH A GAINFUL ACTIVITY BY PROVINCE AND HIGHLY URBANIZED CITY



TOP FIVE MAJOR OCCUPATION GROUPS



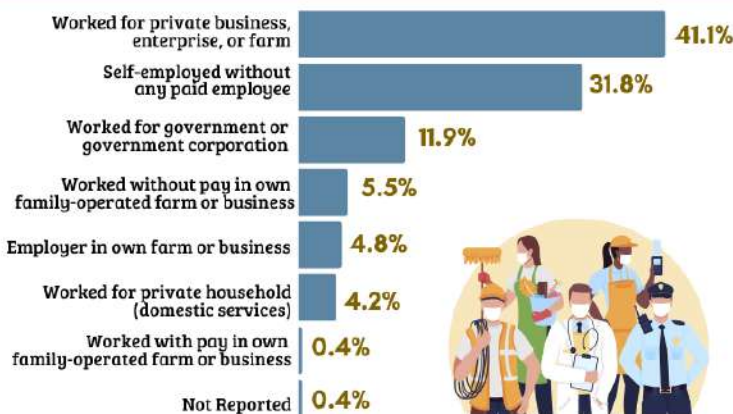
PERCENTAGE DISTRIBUTION OF GAINFUL WORKERS BY MAJOR SECTOR OF BUSINESS / INDUSTRY



TOP FIVE BUSINESS / INDUSTRY SECTOR WITH HIGHEST NUMBER OF GAINFUL WORKERS 15 YEARS OLD AND OVER



PERCENTAGE DISTRIBUTION OF GAINFUL WORKERS BY CLASS OF WORKER



PERCENTAGE DISTRIBUTION OF GAINFUL WORKERS BY PLACE OF WORK

