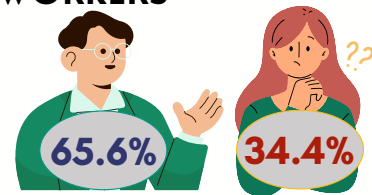
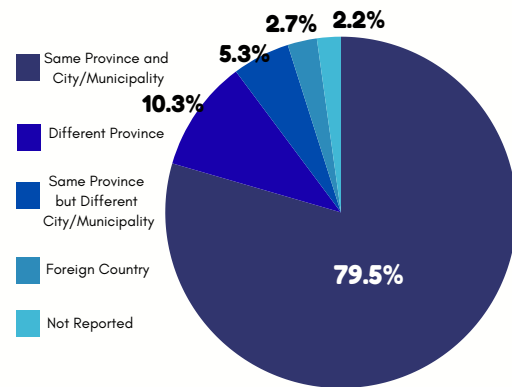
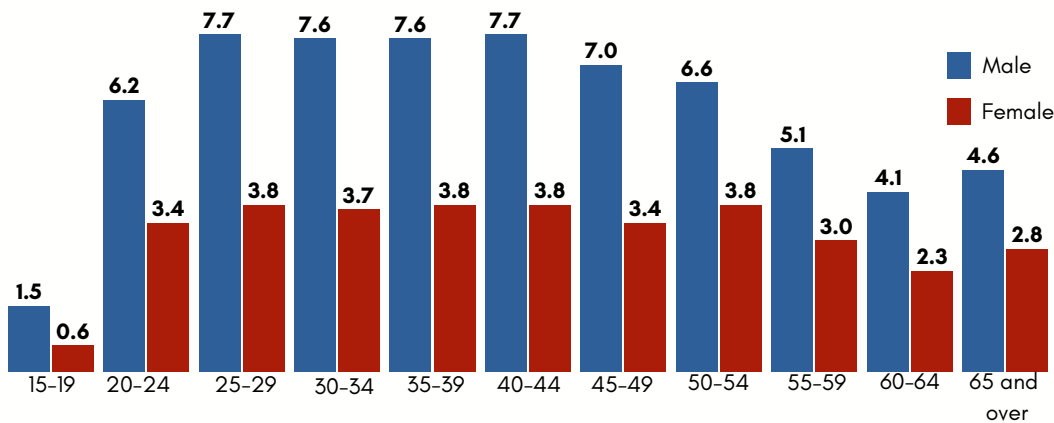


A gainful worker is someone who has worked at least 10 hours a week for six months (or 26 weeks) in the past year, including vacations or sick leave. This includes work for pay, profit from a business or farm, or unpaid work in a family business

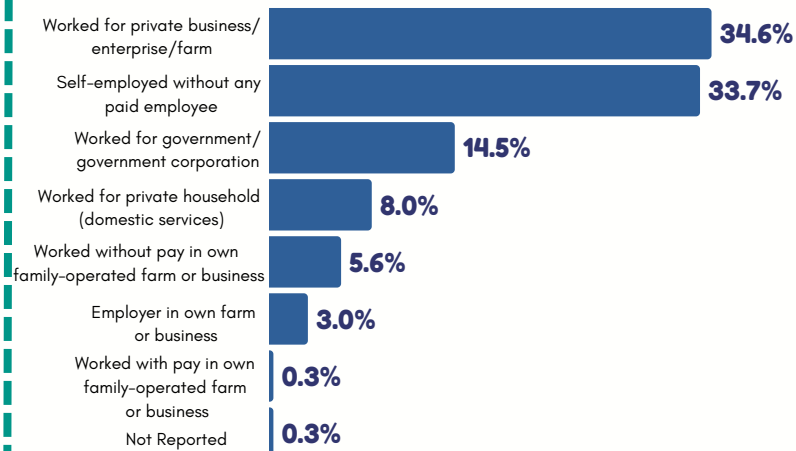
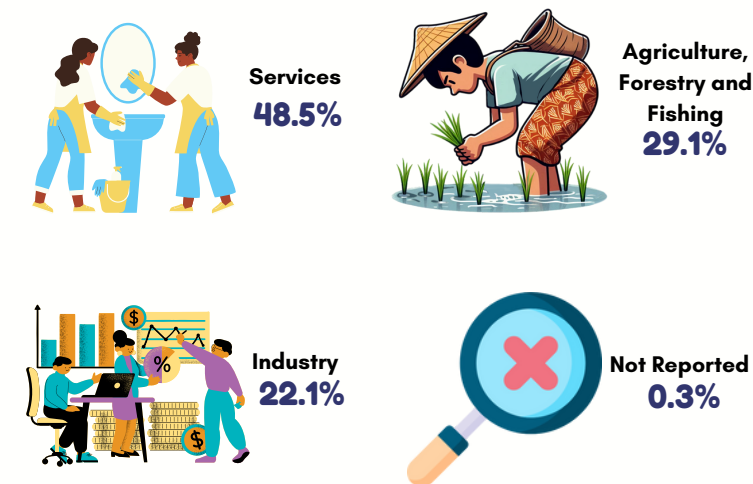
out of 164,487 household
population 15 years and over



PERCENTAGE DISTRIBUTION OF GAINFUL WORKERS BY PLACE OF WORK



PERCENTAGE DISTRIBUTION OF GAINFUL WORKERS BY CLASS OF WORKER



TOP FIVE BUSINESS/INDUSTRY SECTOR WITH HIGHEST NUMBER OF GAINFUL WORKERS 15 YEARS OLD AND OVER

