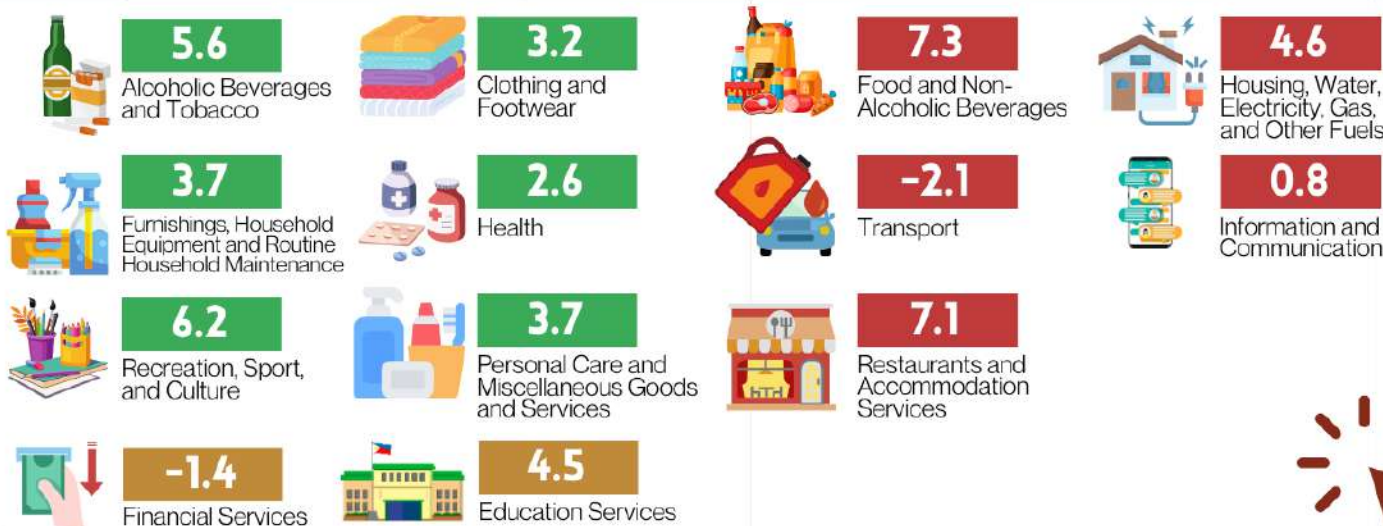


? The **INFLATION RATE** is the annual rate of change of the **CONSUMER PRICE INDEX**, expressed in percent.

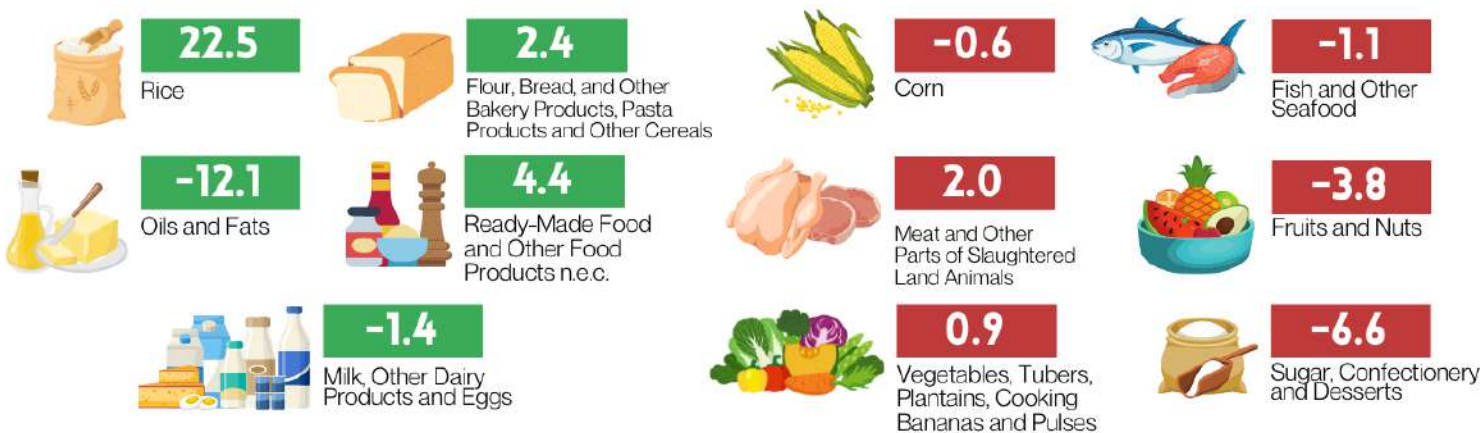
#### MAIN SOURCES OF ACCELERATION: MIMAROPA REGION



### INFLATION RATE BY COMMODITY GROUP



### INFLATION RATE BY FOOD GROUP



Note: ● decreased relative to March 2024 inflation

● increased relative to March 2024 inflation

● same as/equal to March 2024 inflation

