



MIMAROPA REGION INFLATION RATE FOR ALL INCOME HOUSEHOLDS (2018=100) JANUARY 2025



Reference No. 2025-IG-18

PHILIPPINES

2.8
JANUARY 2024

2.9
DECEMBER 2024

2.9
JANUARY 2025

MIMAROPA REGION

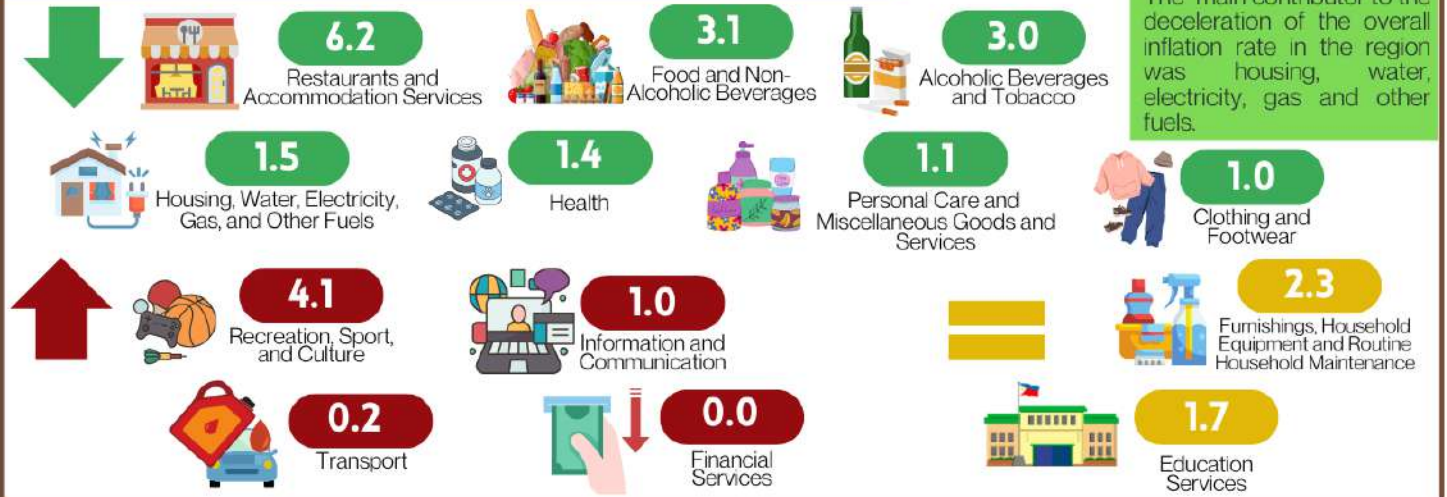
3.6
JANUARY 2024

2.9
DECEMBER 2024

2.4
JANUARY 2025

The **INFLATION RATE** is the annual rate of change of the **CONSUMER PRICE INDEX**, expressed in percent.

INFLATION RATE BY COMMODITY GROUP

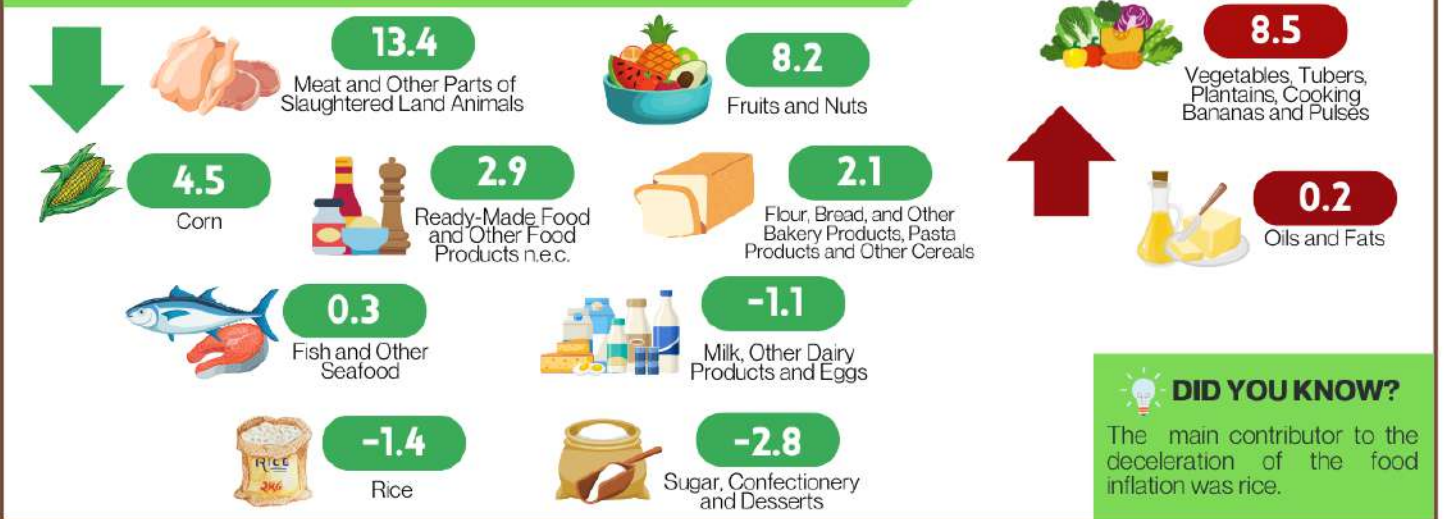


DID YOU KNOW?

The main contributor to the deceleration of the overall inflation rate in the region was housing, water, electricity, gas and other fuels.

Note: ↓ decreased relative to December 2024 inflation ↑ increased relative to December 2024 inflation = same as/equal to December 2024 inflation

INFLATION RATE BY FOOD GROUP



DID YOU KNOW?

The main contributor to the deceleration of the food inflation was rice.

PURCHASING POWER OF PESO: JANUARY 2024 TO JANUARY 2025

The **PURCHASING POWER OF PESO** shows how much the peso in the base period is worth in the current period. It is computed as the reciprocal of the CPI for the period under review, multiplied by 100.

