



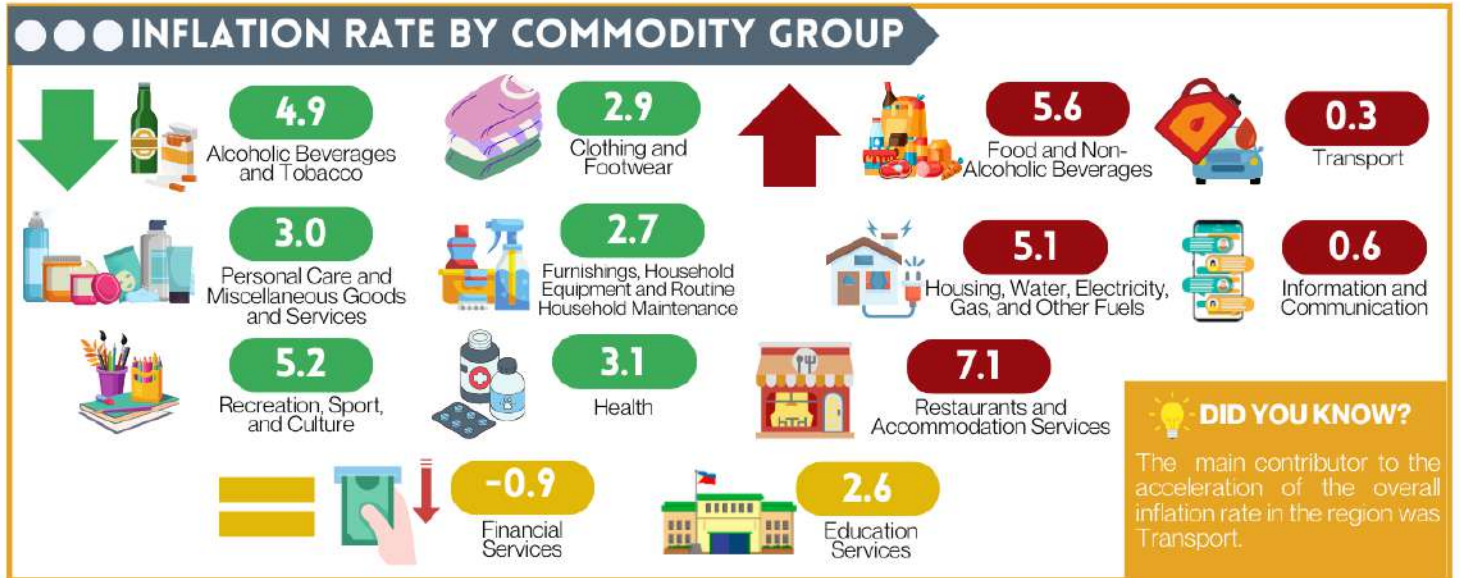
# MIMAROPA REGION INFLATION RATE FOR ALL INCOME HOUSEHOLDS (2018=100) MAY 2024



Reference No. 2024-IG-66



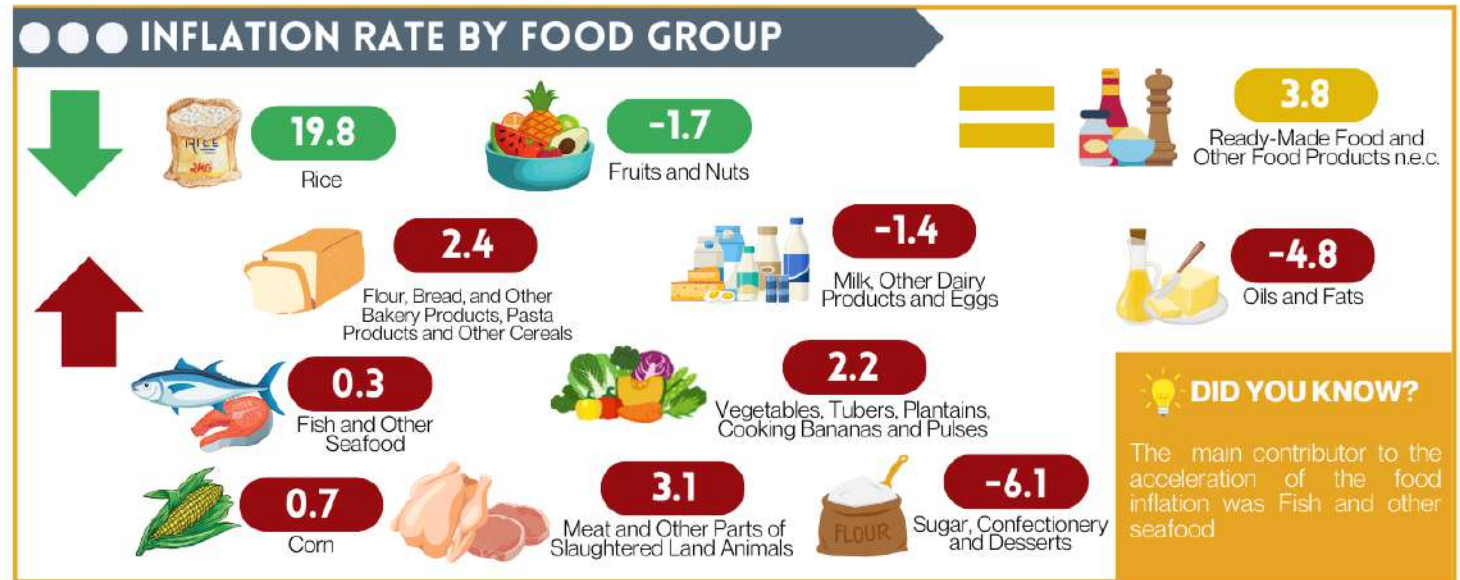
**?** The **INFLATION RATE** is the annual rate of change of the **CONSUMER PRICE INDEX**, expressed in percent.



Note: decreased relative to April 2024 inflation

increased relative to April 2024 inflation

same as/equal to April 2024 inflation



### PURCHASING POWER OF PESO: MAY 2023 TO MAY 2024

The **PURCHASING POWER OF PESO** shows how much the peso in the base period is worth in the current period. It is computed as the reciprocal of the CPI for the period under review, multiplied by 100.

