

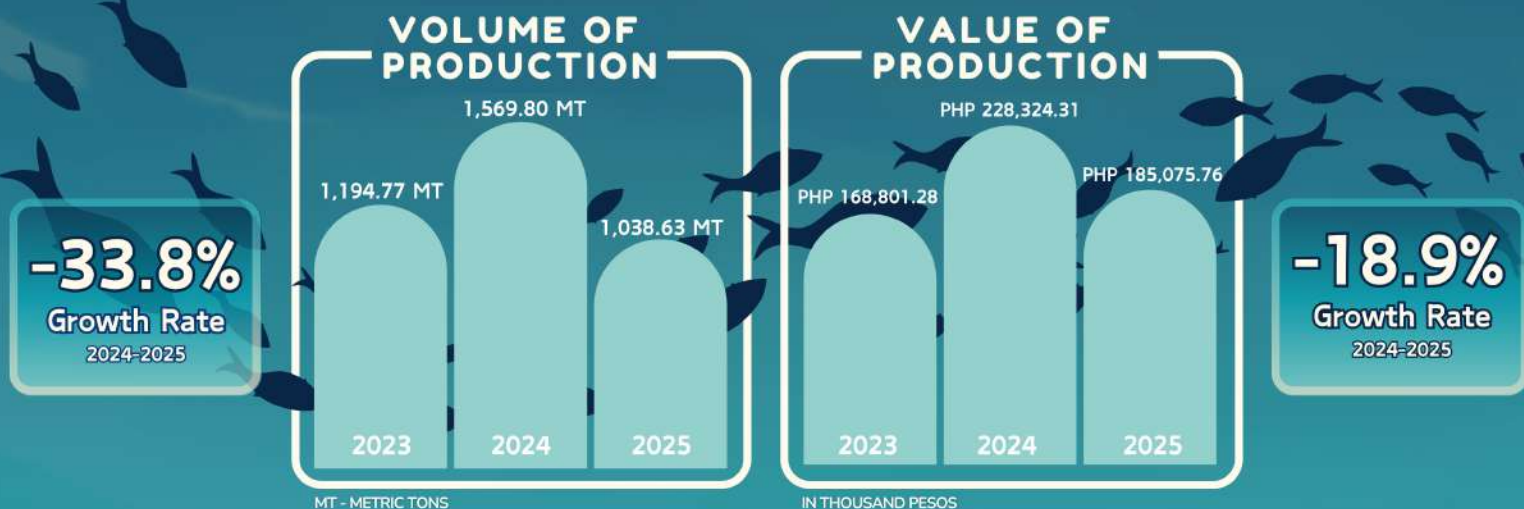


FISHERIES STATISTICS

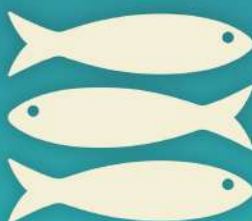
IN ORIENTAL MINDORO

First Quarter 2025

Release Date: 14 July 2025
Reference No.: 2025-IG-127



VOLUME OF PRODUCTION of MAJOR SPECIES



FISHERIES SUBSECTORS

- Marine Municipal
- Commercial
- Inland Municipal
- Aquaculture



ROUNDSCAD
(Galunggong)
194.89 MT



FRIGATE TUNA
(Tulungan)
133.66 MT



BALI SARDINELLA
(Tamban)
124.13 MT



TILAPIA
110.87 MT



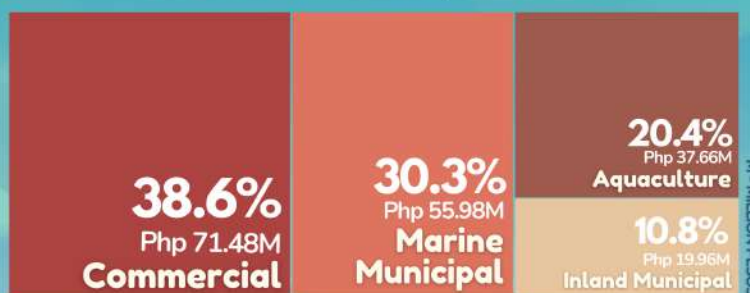
P. VANNAMEI
66.87 MT

PERCENT DISTRIBUTION OF VOLUME AND VALUE OF PRODUCTION BY SUBSECTOR, Q1 2025

Volume of Production by Subsector



Value of Production by Subsector



Source: Philippine Statistics Authority
vectors and images from canva and google

TECHNICAL NOTES

The Fisheries infographics presents the data on volume and value of production of fisheries derived from the quarterly surveys conducted by the Philippine Statistics Authority. The surveys are: Quarterly Commercial Fisheries Survey (QCFS), Quarterly Municipal Fisheries Survey (QMFS), Quarterly Inland Fisheries Survey (QIFS), and Quarterly Aquaculture Survey (QAqS).

These surveys are conducted quarterly with reference period: January to March for the First Quarter, April to June for the Second Quarter, July to September for the Third Quarter, and October to December for the Fourth Quarter. Data are collected from the sample fish landing centers for QCFS and QMFS, from sample households for QIFS, and from sample aquafarms for QAqS.



Visit us at
rssomimaropa.psa.gov.ph/orientalmindoro



For Technical Inquiries
orientalmindoro@psa.gov.ph



Like us on Facebook
PSA Oriental Mindoro



Follow us on X
[@PSA_OrMindoro](https://twitter.com/PSA_OrMindoro)

