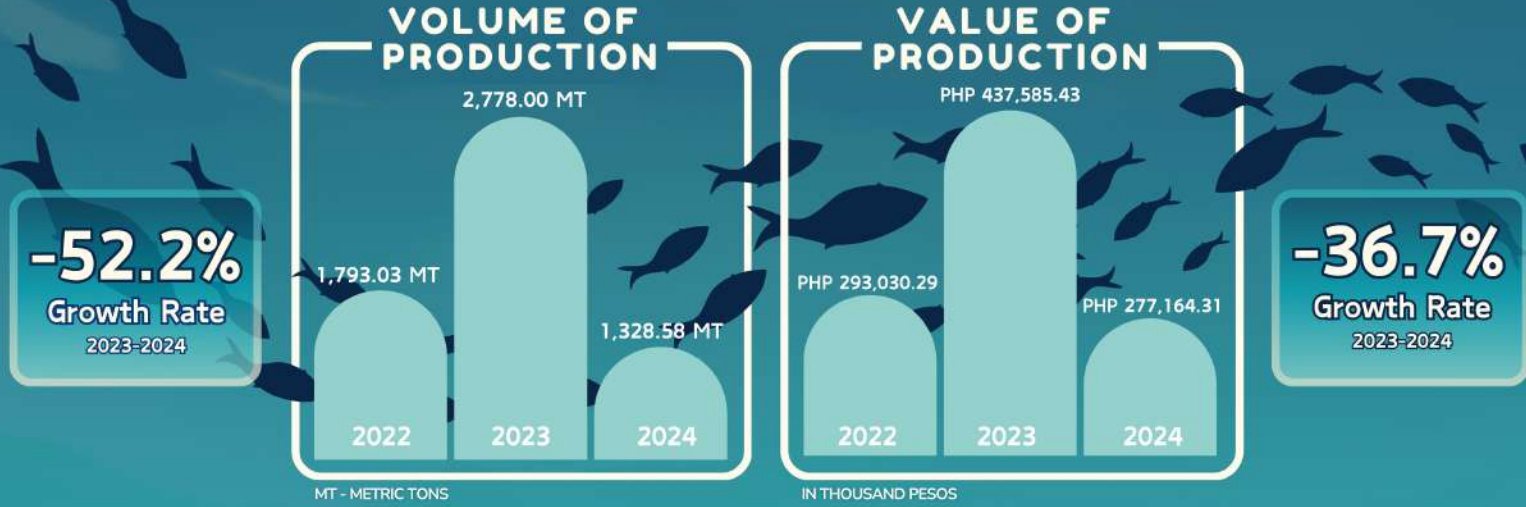




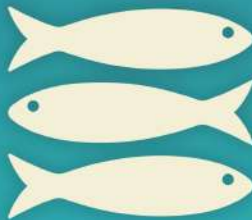
FISHERIES STATISTICS IN ORIENTAL MINDORO

Fourth Quarter 2024

Release Date: 11 February 2025
Reference No.: 2025-IG-059



VOLUME OF PRODUCTION of MAJOR SPECIES



FISHERIES SUBSECTORS

- Marine Municipal Commercial
- Inland Municipal Aquaculture



PERCENT DISTRIBUTION OF VOLUME AND VALUE OF PRODUCTION BY SUBSECTOR, Q4 2024

Volume of Production by Subsector

Value of Production by Subsector



Source: Philippine Statistics Authority vectors and images from canva and google

TECHNICAL NOTES

The Fisheries infographics presents the data on volume and value of production of fisheries derived from the quarterly surveys conducted by the Philippine Statistics Authority. The surveys are: Quarterly Commercial Fisheries Survey (QCFS), Quarterly Municipal Fisheries Survey (QMFS), Quarterly Inland Fisheries Survey (QIFS), and Quarterly Aquaculture Survey (QAQS). These surveys are conducted quarterly with reference period: January to March for the First Quarter, April to June for the Second Quarter, July to September for the Third Quarter, and October to December for the Fourth Quarter. Data are collected from the sample fish landing centers for QCFS and QMFS, from sample households for QIFS, and from sample aquafarms for QAQS.



Visit us at rssomimaropa.psa.gov.ph/orientalmindoro



For Technical Inquiries
orientalmindoro@psa.gov.ph



Like us on Facebook
PSA Oriental Mindoro



Follow us on X
[@PSA_OrMindoro](https://twitter.com/PSA_OrMindoro)

