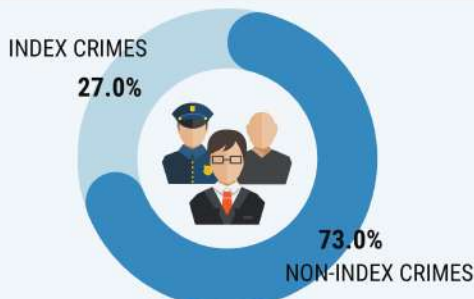


3,850 TOTAL CRIME INCIDENCE



THIS REPRESENTS A CRIME RATE OF 9.78 PER 100,000 PERSONS.

Source: Philippine National Police

A TOTAL OF
2,053 PRISONERS
was recorded in 2024.



1,982
DETAINED

71
SENTENCED

Source: Bureau of Jail Management and Penology

320 CASES VIOLENCE AGAINST WOMEN



VIOLATION OF RA 9262 (VAWC)

59.4%

RAPE

16.9%

ACTS OF LACIVIOUSNESS

15.6%

ATTEMPTED RAPE

2.2%

Source: Philippine National Police

705 CASES VIOLENCE AGAINST CHILDREN



PHYSICAL AND EMOTIONAL ABUSE

38.2%

RAPE

29.9%

STATUTORY RAPE

16.7%

ACTS OF LASCIVIOUSNESS

8.2%

TOTAL PROPERTY DAMAGES PHP 353.90 MILLION

TOP THREE PROVINCES WITH THE HIGHEST
PROPERTY DAMAGES FROM FIRE INCIDENCES

- 1 PALAWAN** PHP 214.14 MILLION
- 2 OCCIDENTAL MINDORO** PHP 99.40 MILLION
- 3 ORIENTAL MINDORO** PHP 28.41 MILLION



Source: Bureau of Fire Protection

429 RECORDED FIRE INCIDENCE



2 DEATHS

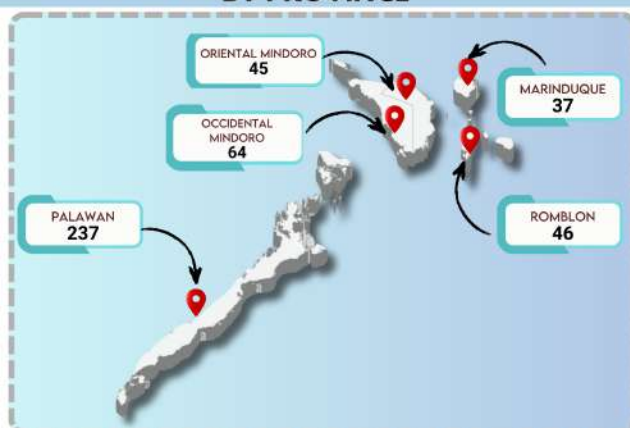


23 INJURIES



Source: Bureau of Fire Protection

RECORDED FIRE INCIDENCES BY PROVINCE



Source: Bureau of Fire Protection

1,191 FIREFIGHTERS



1 : 2,699

1 firefighter for every
2,699 MIMAROPAns

Source: Bureau of Fire Protection



876 MALE
FIREFIGHTERS



315 FEMALE
FIREFIGHTERS