



# 2022 ANNUAL SURVEY OF PHILIPPINE BUSINESS AND INDUSTRY

## PROFESSIONAL, SCIENTIFIC AND TECHNICAL ACTIVITIES

### MIMAROPA REGION



Reference Number: 2024-IG-155



This section includes specialized professional, scientific and technical activities. These activities require a high degree of training, and make specialized knowledge and skills available to users.



**TOTAL NUMBER OF  
ESTABLISHMENTS**

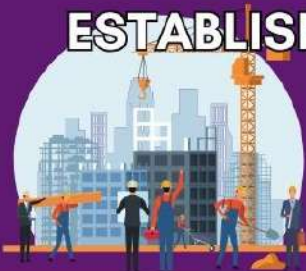
**66**

**TOTAL EMPLOYMENT**



**306**  
workers

**AVERAGE NUMBER OF  
WORKERS PER  
ESTABLISHMENT**



**5**

**94.4%**

paid employees

**5.6%**

working owners and  
unpaid workers

**TOTAL  
COMPENSATION**



**Php 38.69**  
million

**AVERAGE ANNUAL  
COMPENSATION**



**Php 133,858**  
per paid employee

**TOTAL REVENUE**

**Php 313.22** million

**TOTAL EXPENSE**

**Php 262.03** million



**REVENUE PER PESO  
EXPENSE RATIO**

**Php 1.20**

This indicates that for every peso spent by an establishment under the **Professional, Scientific and Technical Activities Section**, a corresponding revenue of **Php 1.20** was generated.



Visit us at:  
[www.rssomimaropa.psa.gov.ph](http://www.rssomimaropa.psa.gov.ph)



For Technical Inquiries:  
[psomimaropa@psa.gov.ph](mailto:psomimaropa@psa.gov.ph)  
[rssomimaropasocde@psa.gov.ph](mailto:rssomimaropasocde@psa.gov.ph)



Like us on Facebook:  
[/psomimaropa](https://www.facebook.com/psomimaropa)



Contact us on  
(043) 286-7491  
(043) 470-0598