



## RSSO MIMAROPA cascades the Field Operations of the Quarterly Fisheries Surveys to its Provincial Statistics Offices

The Philippine Statistics Authority (PSA) successfully capacitated its provincial focal persons and involved personnel from Regional Statistical Services Office (RSSO) MIMAROPA SOCD in the recently concluded Second Level Training on Fisheries Surveys at PSA MIMAROPA Training Room in Calapan City on 26-28 February 2025.

Resource persons during the training were Statistical Specialist II (SS II) Rachel V. De Lemos from RSSO MIMAROPA SOCD, and SS II Maylyn Q. Villegas from PSO Palawan.

The session covered the four subsectors of fisheries surveys: Commercial Fisheries, Municipal Fisheries, Inland Fisheries, and Aquaculture Surveys. The commercial and municipal fisheries surveys aim to provide quarterly data on the volume and value of fish production by species, region, and province. The aquaculture e-survey intends to generate quarterly data on the volume and value of cultured species by the environment, type of aquafarm, region, and province.

*continued on page 2*

### IN THIS ISSUE

**RSSO MIMAROPA cascades the Field Operations of the Quarterly Fisheries Surveys to its Provincial Statistics Offices**

page 1

**RSSO MIMAROPA holds the January 2025 Inflation Press Conference**

page 2

**2024 Palay Situation in MIMAROPA Region**

page 3

**2024 Corn Situation in MIMAROPA Region**

page 3

#### Contributors:

Rachel V. De Lemos	Statistical Specialist II
Ana Patricia A. Ramos	Statistical Specialist II
Joyce P. Ricaña	Assistant Statistician

#### Layout Artist:

Joyce P. Ricaña	Assistant Statistician
-----------------	------------------------

#### Prepared by:

Rhoda S. Sulit	Information Officer I
----------------	-----------------------



# MIMAROPA Newslink

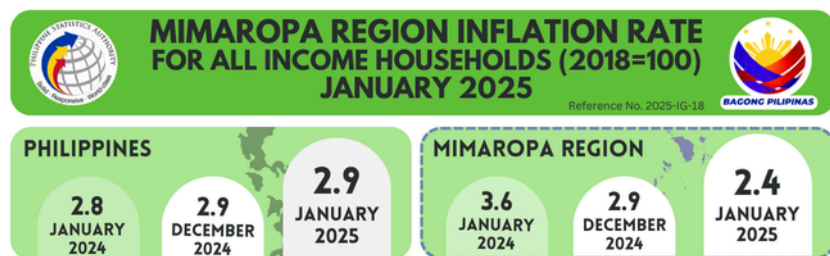
THE OFFICIAL NEWSLETTER OF PHILIPPINE STATISTICS AUTHORITY MIMAROPA

continuation of page one...

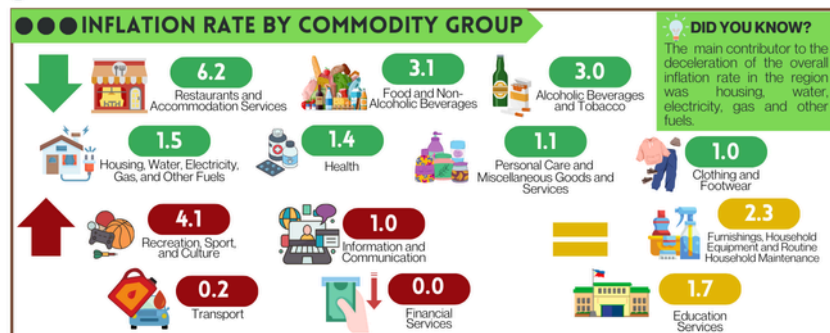
The training also covered the introduction to fish morphology and taxonomy for identification. The demonstration of Management Information System for fisheries, Agriculture and Fisheries Mobile App, and the Data Processing System were also discussed.

## RSSO MIMAROPA holds the January 2025 Inflation Press Conference

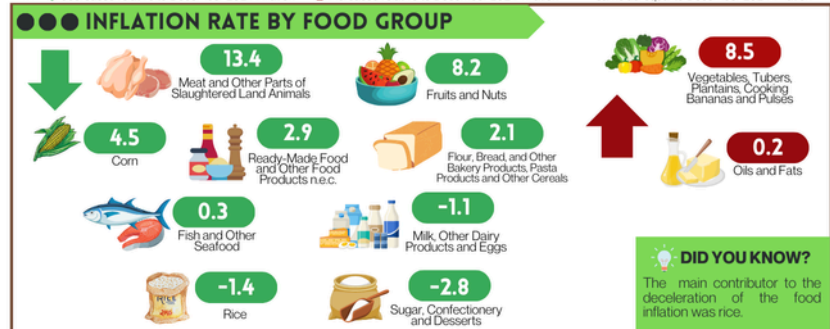
RSSO MIMAROPA conducted a press conference on January 2025 Inflation of the MIMAROPA Region on 10 February 2025 in Calapan City, Oriental Mindoro.



The **INFLATION RATE** is the annual rate of change of the **CONSUMER PRICE INDEX**, expressed in percent.

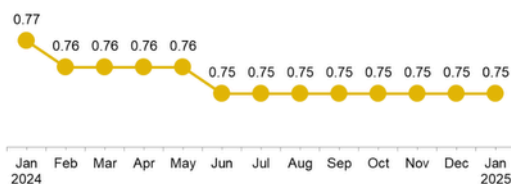


Note: ↓ decreased relative to December 2024 inflation ↑ increased relative to December 2024 inflation = same as/equal to December 2024 inflation



### PURCHASING POWER OF PESO: JANUARY 2024 TO JANUARY 2025

The **PURCHASING POWER OF PESO** shows how much the peso in the base period is worth in the current period. It is computed as the reciprocal of the CPI for the period under review, multiplied by 100.



Supervising Statistical Specialist (SSS) Oscar H. Gatpandan presented the January 2025 inflation data, revealing that the region's headline inflation rate slightly eased to 2.4 percent in January 2025, from the 2.9 percent inflation in the previous month. The slight decrease was driven by housing, water, electricity, gas and other fuels, and food and non-alcoholic beverages. SSS Gatpandan also detailed which commodity groups exhibited faster, slower, or steady inflation growth.

Assistant Regional Director (ARD) Bernardino A. Atienza, Jr. of the National Economic and Development Authority (NEDA) MIMAROPA delivered additional insights on behalf of Regional Director Agustin C. Mendoza. ARD Atienza outlined key insights from SSS Gatpandan's report, providing additional context on the factors influencing inflation trends in the provinces and highly-urbanized city of the region. He highlighted actions taken by various government agencies as outlined in the Regional Development Plan 2023-2028.

REPUBLIC OF THE PHILIPPINES  
PHILIPPINE STATISTICS AUTHORITY  
REGIONAL STATISTICAL SERVICES OFFICE MIMAROPA

For Technical Inquiries:  
rssomimaropa@psa.gov.ph  
rssomimaropasocd@psa.gov.ph

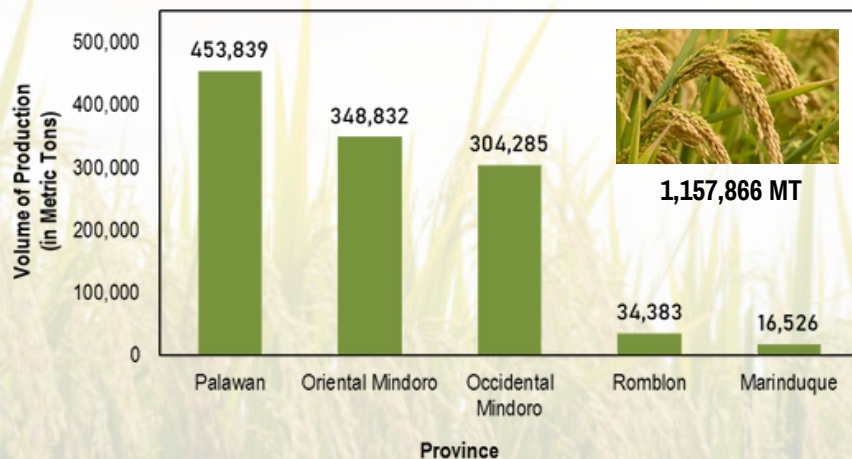
Visit us at:  
www.psa.gov.ph

Contact us:  
(043) 286-7491  
(043) 470-0598



## 2024 Palay Situation in MIMAROPA

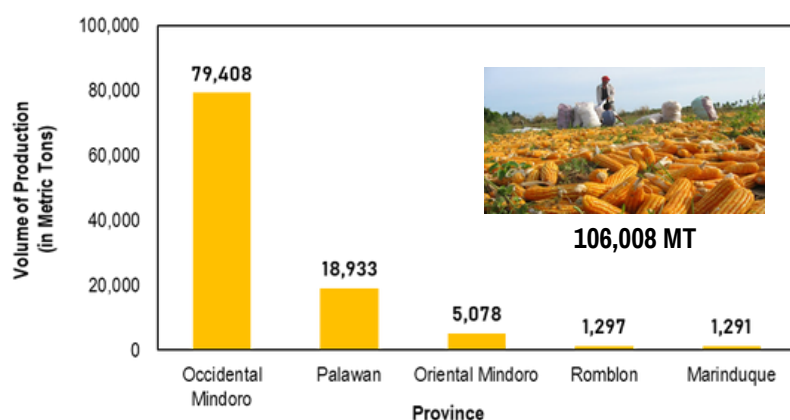
The MIMAROPA region has reported a total palay production of 1,157,866 metric tons for the year 2024, with Palawan emerging as the top producer. According to the latest data, Palawan contributed 453,839 metric tons, accounting for 39.2 percent of the region's total palay production.



Oriental Mindoro followed with a production of 348,832 metric tons, representing 30.1 percent of the regional output. Occidental Mindoro produced 304,285 metric tons, which made up 26.3 percent of the total production.

The combined palay output from the provinces of Romblon and Marinduque was 50,909 metric tons, contributing 4.4 percent to MIMAROPA's overall production.

## 2024 Corn Situation in MIMAROPA



The MIMAROPA region has reported a total corn production of 106,008 metric tons for the year 2024, with Occidental emerging as the top producer. According to the latest data, Occidental Mindoro contributed 79,408 metric tons, accounting for 74.9 percent of the region's total palay production.

Palawan followed with a production of 18,933 metric tons, representing

17.9 percent of the regional output.

The combined palay output from the provinces of Oriental Mindoro, Romblon and Marinduque was 7,667 metric tons, contributing 7.2 percent to MIMAROPA's overall production.